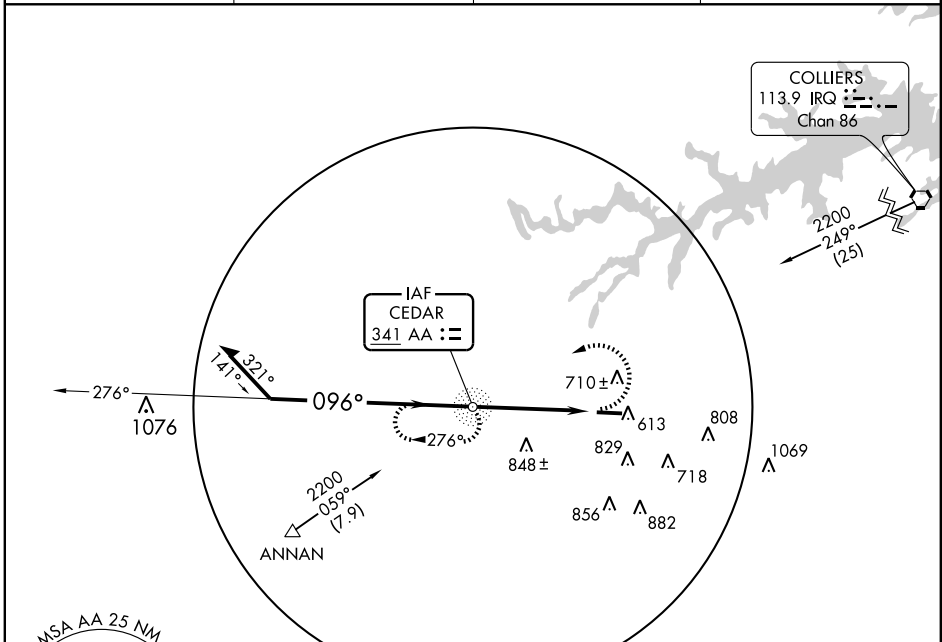


NDB RWY 10

THOMSON-McDUFFIE COUNTY (HQJ)

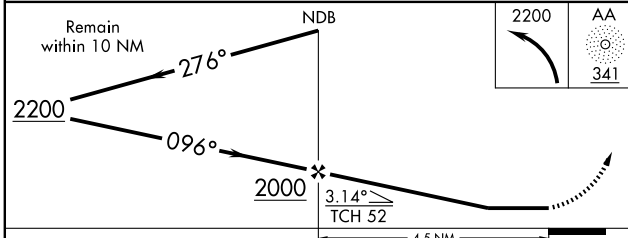
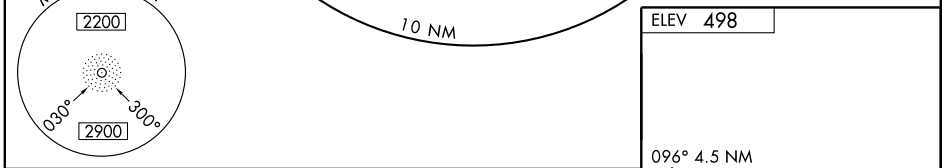
NDB AA 341	APP CRS 096°	Rwy Idg 5208
		TDZE 468
		Apt Elev 498

		MISSED APPROACH: Climbing left turn to 2200 direct CEDAR NDB and hold.	
AWOS-3 120.625	AUGUSTA APP CON ★ 126.8 270.3	UNICOM 122.8 (CTAF) 0	GCO 121.725



SE-4, 22 OCT 2009 to 19 NOV 2009

SE-4, 22 OCT 2009 to 19 NOV 2009



CATEGORY	A	B	C	D
S-10	1020-1	552 (600-1)	1020-1½ 552 (600-1½)	NA
CIRCLING	1020-1 522 (600-1)	1080-1 582 (600-1)	1080-1½ 582 (600-1½)	NA

ELEV 498	
HIRL Rwy 10-28 0	
FAF to MAP 4.5 NM	
Knots	60 90 120 150 180
Min:Sec	4:30 3:00 2:15 1:48 1:30