

(MISTY3.HADOC) 09071

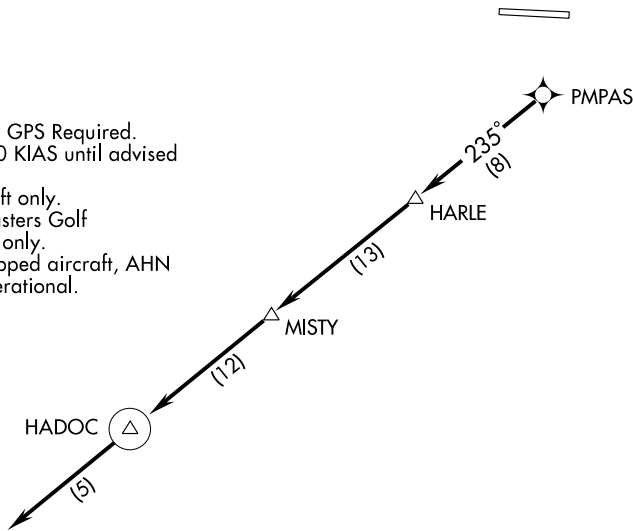
SL-6201 (FAA)

THOMSON-McDUFFIE COUNTY (HQU)  
THOMSON, GEORGIA

# MISTY THREE DEPARTURE (RNAV)

AUGUSTA DEP CON ★  
126.8 270.3  
CTAF  
122.8

- NOTE: RNAV 1.
- NOTE: RADAR Required.
- NOTE: DME/DME/IRU or GPS Required.
- NOTE: Do not exceed 230 KIAS until advised by ATC.
- NOTE: For turbojet aircraft only.
- NOTE: For use during Masters Golf Tournament week only.
- NOTE: For non-GPS equipped aircraft, AHN DME must be operational.



### TAKEOFF MINIMUMS:

- Rwy 10: Standard. ATC climb of 440 feet per NM to 4000.
- Rwy 28: 200-1¼ or Standard with a minimum obstacle climb of 240 feet per NM to 700, or alternatively, with standard takeoff minimums and a normal 200 feet/NM climb gradient. Takeoff must occur no later than 1800 feet prior to departure end of runway. ATC climb of 450 feet per NM to 4000.

NOTE: Chart not to scale.

### DEPARTURE ROUTE DESCRIPTION

TAKEOFF RWY 10, 28: Climb on assigned heading for radar vectors to PMPAS, then via depicted route to HADOC, thence....

.... maintain altitude assigned by ATC. Expect clearance to filed altitude/flight level within 10 minutes after departure.

### TAKEOFF OBSTACLE NOTES:

Rwy 10: Numerous trees beginning abeam DER, 31 feet left of centerline, up to 100 feet AGL/599 feet MSL. Building 934 feet from DER, 19 feet left of centerline, 50 feet AGL/549 feet MSL. Numerous trees beginning 377 feet from DER, 94 feet right of centerline, up to 100 feet AGL/599 feet MSL.

Rwy 28: Tree 5,715 feet from DER, 553 feet left of centerline, 100 feet AGL/619 feet MSL. Numerous trees beginning 32 feet from DER, 216 feet right of centerline, up to 100 feet AGL/579 feet MSL. Numerous trees beginning 8 feet from DER, 53 feet left of centerline, up to 100 feet AGL/629 feet MSL.

# MISTY THREE DEPARTURE (RNAV)

(MISTY3.HADOC) 09071

THOMSON, GEORGIA  
THOMSON-McDUFFIE COUNTY (HQU)

SE-4, 22 OCT 2009 to 19 NOV 2009

SE-4, 22 OCT 2009 to 19 NOV 2009