

HAMPTON, IOWA

AL-6197 (FAA)

VORTAC MCW 114.9 Chan 96	APP CRS 343°	Rwy Idg 4018 TDZE 1175 Apt Elev 1176
--	------------------------	---

VOR/DME RWY 35

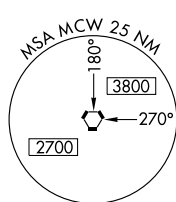
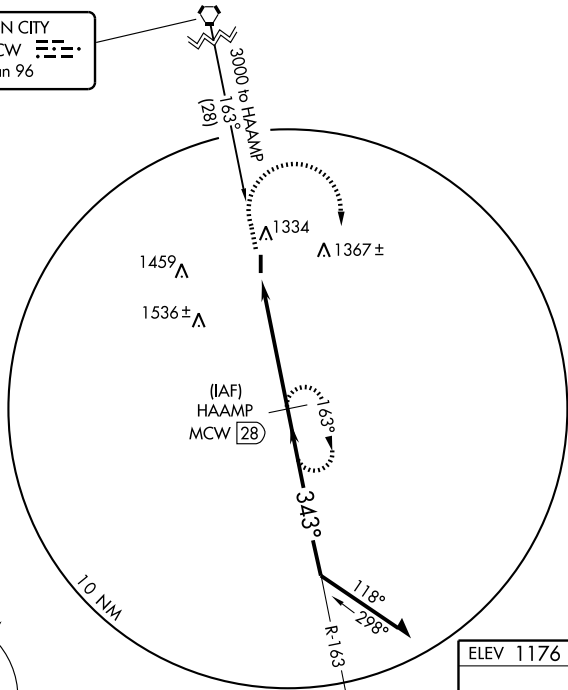
HAMPTON MUNI (HPT)

<p>▼ Use Mason City altimeter setting.</p> <p>▲ NA</p>	<p>MISSED APPROACH: Climb to 3000 then right turn via MCW R-163 to HAAMP/28 DME and hold.</p>
<p>MINNEAPOLIS CENTER 134.0 288.3</p>	<p>UNICOM 122.7 (CTAF) 1</p>

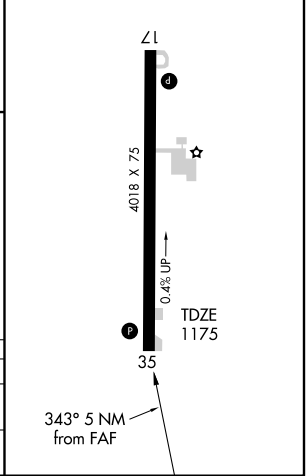
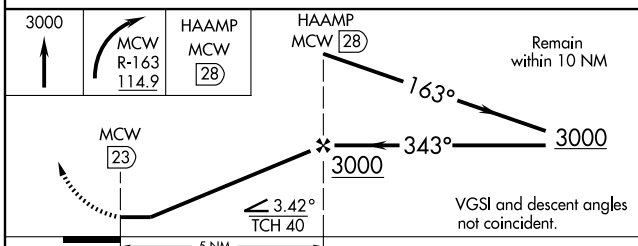
NC-3, 22 OCT 2009 to 19 NOV 2009

NC-3, 22 OCT 2009 to 19 NOV 2009

MASON CITY
114.9 MCW
Chan 96



ELEV 1176 REIL Rwy 17 and 35
MIRL Rwy 17-35



CATEGORY	A	B	C	D
S-35	1880-1 705 (800-1)	1880-1¼ 705 (800-1¼)		NA
CIRCLING	1880-1 704 (800-1)	1880-1¼ 704 (800-1¼)		NA

HAMPTON, IOWA
Amdt 1B 09071

42°43'N-93°14'W

HAMPTON MUNI (HPT) VOR/DME RWY 35