

RNAV (GPS) RWY 5

ANGOLA/ TRI-STATE STEUBEN COUNTY (ANQ)

APP CRS 052°	Rwy ldg 4000
	TDZE 990
	Apt Elev 995

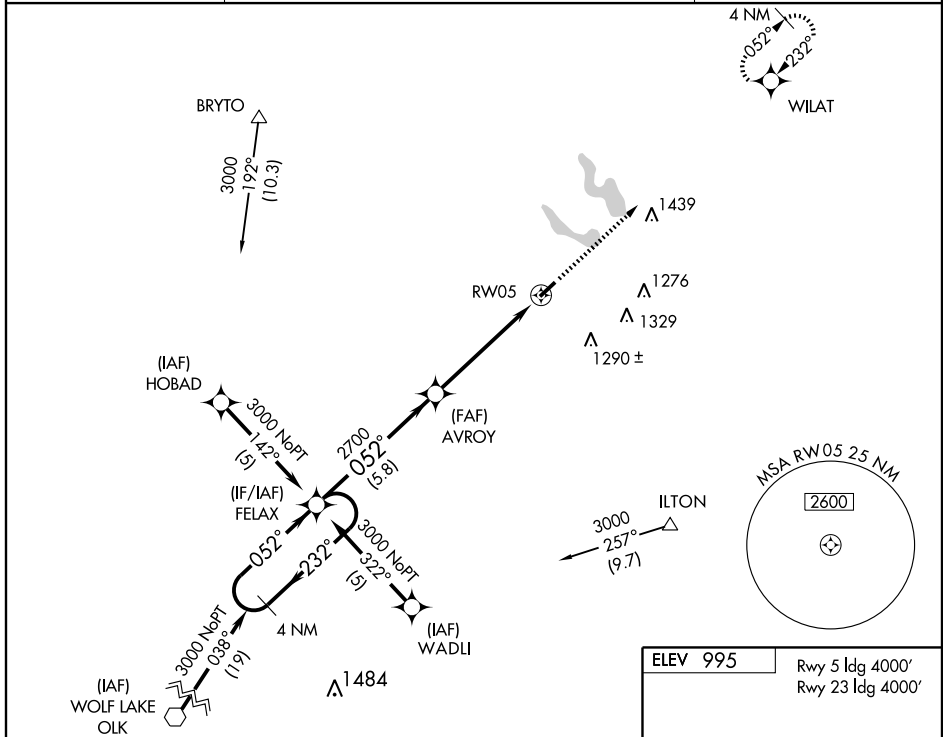
▲ NA BARO-VNAV NA below -17°C (1°F).
GPS or RNP-0.3 required.
DME/DME RNP -0.3 NA.

MISSED APPROACH: Climb to 3000 via 052° course to WILAT WP and hold.

AWOS-3
118.175

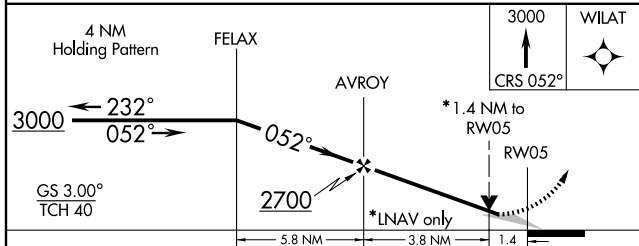
FORT WAYNE APP CON
132.15 (SE/NE) **284.6**
127.2 (SW/NW) **284.6**

UNICOM
123.075 (CTAF) **0**



EC-2, 22 OCT 2009 to 19 NOV 2009

EC-2, 22 OCT 2009 to 19 NOV 2009



CATEGORY	A	B	C	D
GLS PA DA	NA			
LNAV/VNAV DA	1400 - 1½	410(500-1½)		NA
LNAV MDA	1460 - 1	470(500-1)	1460 - 1¼ 470(500-1¼)	NA
CIRCLING	1520 - 1½	525(600-1½)		NA

