

# RNAV (GPS) RWY 23

ANGOLA/ TRI-STATE STEUBEN COUNTY (A.NQ)

APP CRS <b>232°</b>	Rwy ldg TDZE Apt Elev	<b>4000</b> <b>995</b> <b>995</b>
------------------------	-----------------------------	---

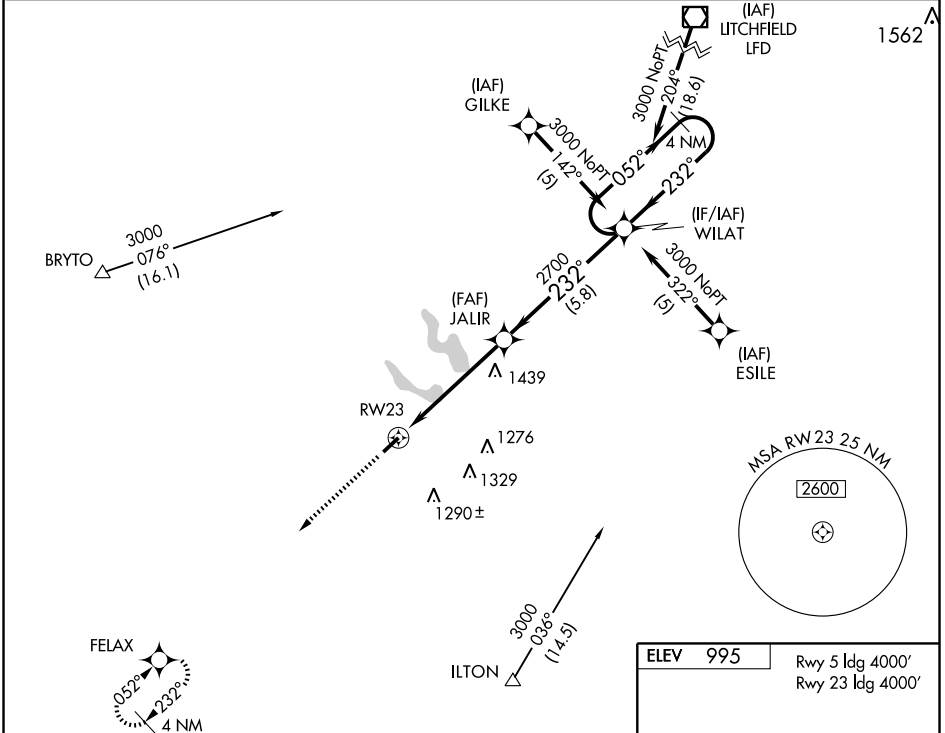
**▲** NA  
BARO-VNAV NA below -17°C (1°F).  
GPS or RNP-0.3 required.  
DME/DME RNP -0.3 NA.

MISSED APPROACH: Climb to 3000 via 232° course to FELAX WP and hold.

AWOS-3  
**118.175**

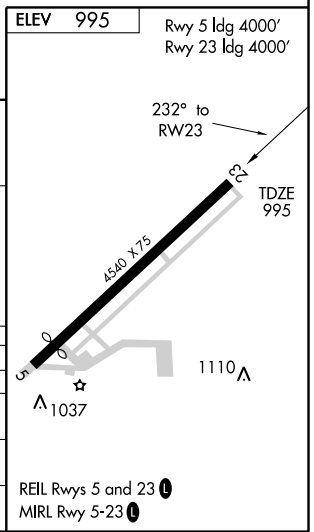
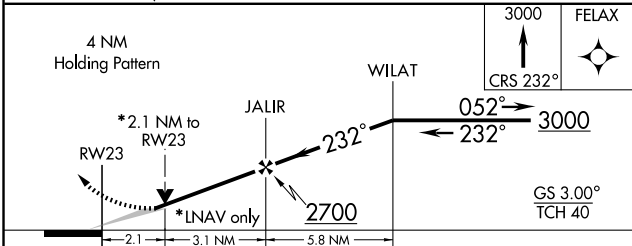
FORT WAYNE APP CON  
**132.15** (SE/NE) **284.6**  
**127.2** (SW/NW) **284.6**

UNICOM  
**123.075** (CTAF) **①**



EC-2, 22 OCT 2009 to 19 NOV 2009

EC-2, 22 OCT 2009 to 19 NOV 2009



CATEGORY	A	B	C	D
GLS PA DA	NA			
LNAV/VNAV DA	1460 - 1¾	465 (500-1¾)		NA
LNAV MDA	1700 - 1	705 (800-1)	1700 - 2 705 (800-2)	NA
CIRCLING	1700 - 1¾	705 (800-1¾)	1700 - 2 705 (800-2)	NA