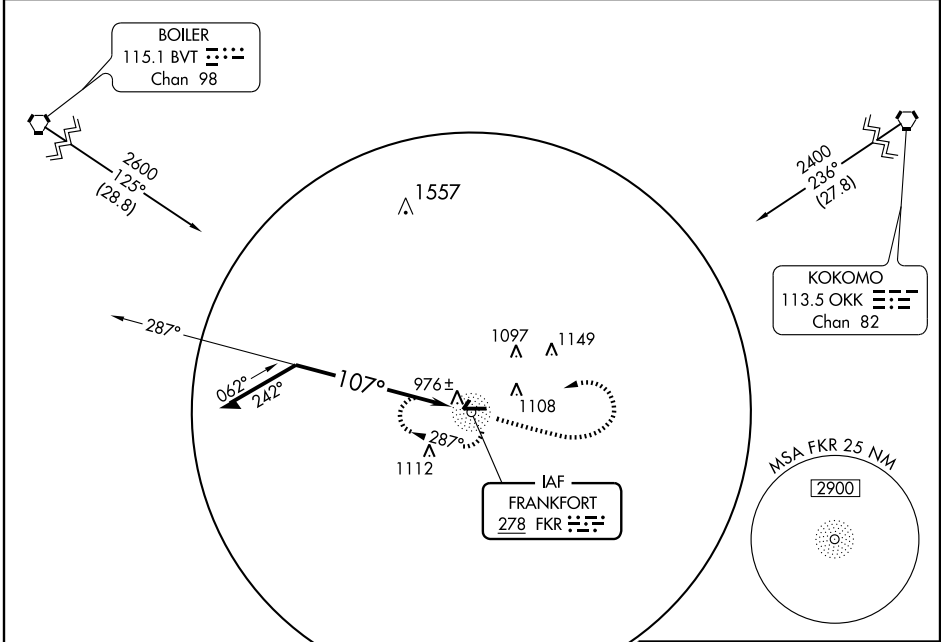


NDB RWY 9
FRANKFORT MUNI (F'KR)

NDB FKR 278	APP CRS 107°	Rwy Idg TDZE Apt Elev	5000 859 861
-----------------------	------------------------	-----------------------------	---

▲ NA	MISSED APPROACH: Climb to 2400, then left turn direct FKR NDB and hold.
-------------	---

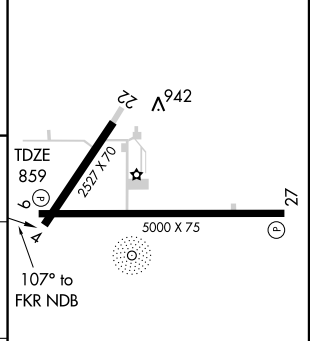
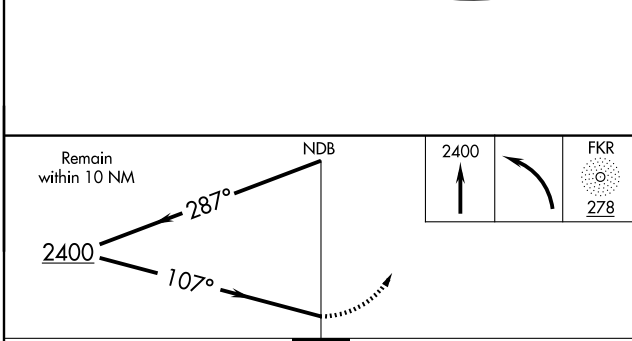
AWOS-3 124.325	CHICAGO CENTER 123.85 343.95	UNICOM 123.0 (CTAF) 0
--------------------------	--	---------------------------------



EC-2, 22 OCT 2009 to 19 NOV 2009

EC-2, 22 OCT 2009 to 19 NOV 2009

ELEV	861
------	------------



CATEGORY	A	B	C	D
S-9	1360-1	501 (500-1)	1360-1½	501 (500-1½)
CIRCLING	1460-1	599 (600-1)	1460-1½	1460-2
			599 (600-1½)	599 (600-2)

MIRL Rwy 9-27 and 4-22 0					
REIL Rwy 9 and 27 0					
Knots	60	90	120	150	180
Min:Sec					