

RNAV (GPS) RWY 35

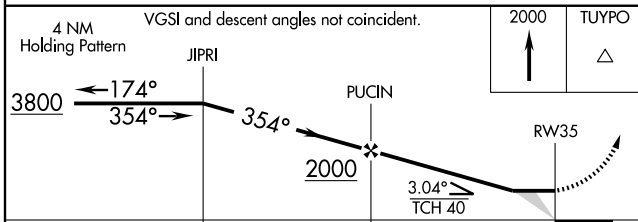
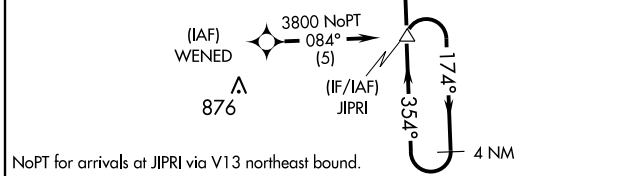
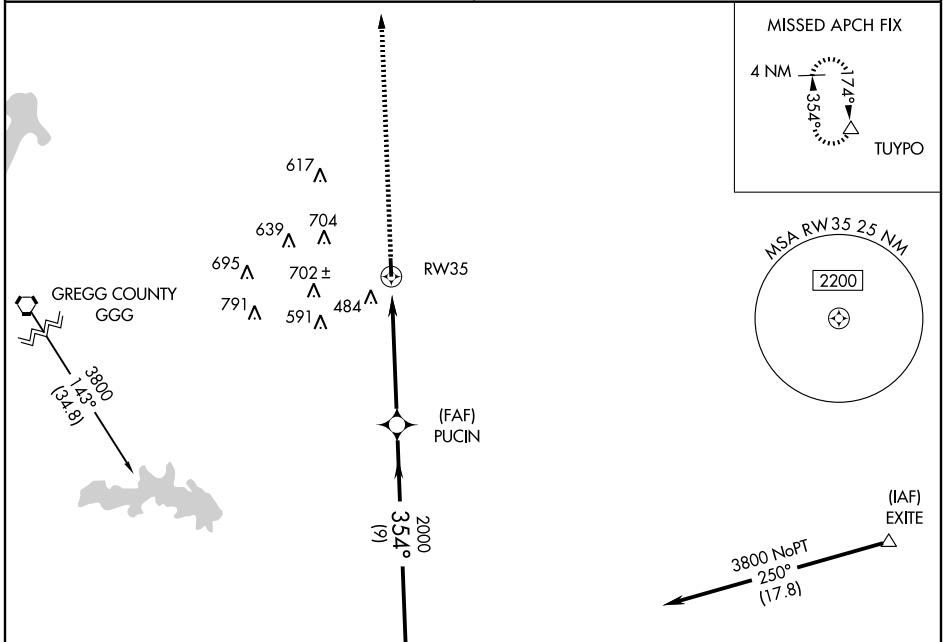
CARTHAGE/ PANOLA COUNTY-SHARPE FIELD (4F2)

APP CRS	Rwy Idg	4000
354°	TDZE	248
	Apt Elev	248

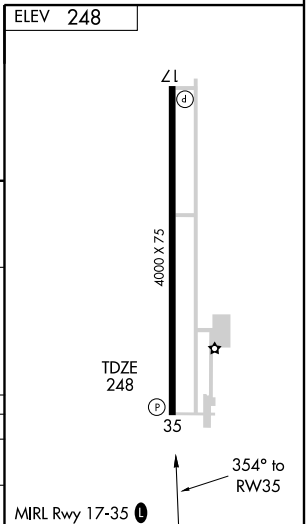
▲ NA	DME/DME RNP-0.3 NA. Use Shreveport Rgnl altimeter setting; when not received use East Texas Rgnl altimeter setting.	MISSED APPROACH: Climb to 2000 direct TUYPO and hold.
-------------	---	---

SHREVEPORT APP CON *
119.9 335.55

UNICOM
122.8 (CTAF) 0



CATEGORY	A	B	C	D
RNAV MDA	840-1	592 (600-1)	840-1½ 592 (600-1½)	NA
CIRCLING	920-1	672 (700-1)	920-2 672 (700-2)	NA



SC-2, 22 OCT 2009 to 19 NOV 2009

SC-2, 22 OCT 2009 to 19 NOV 2009

RNAV (GPS) RWY 35