

CARTHAGE, TEXAS

AL-6193 (FAA)

# NDB RWY 35

CARTHAGE/ PANOLA COUNTY-SHARPE FIELD (4F2)

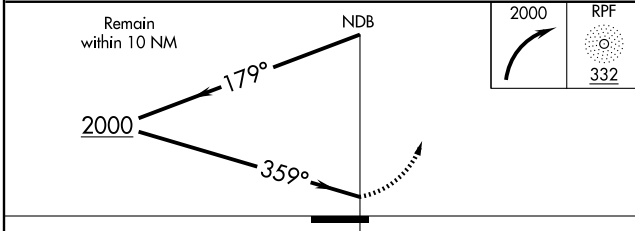
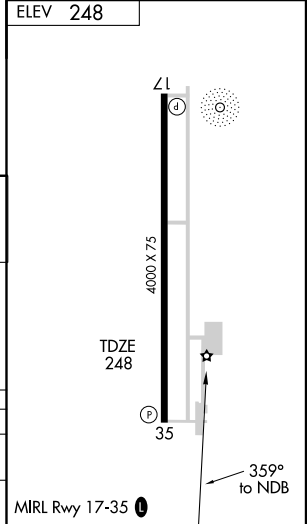
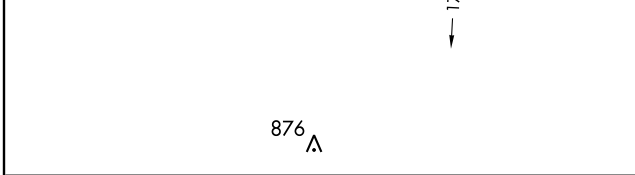
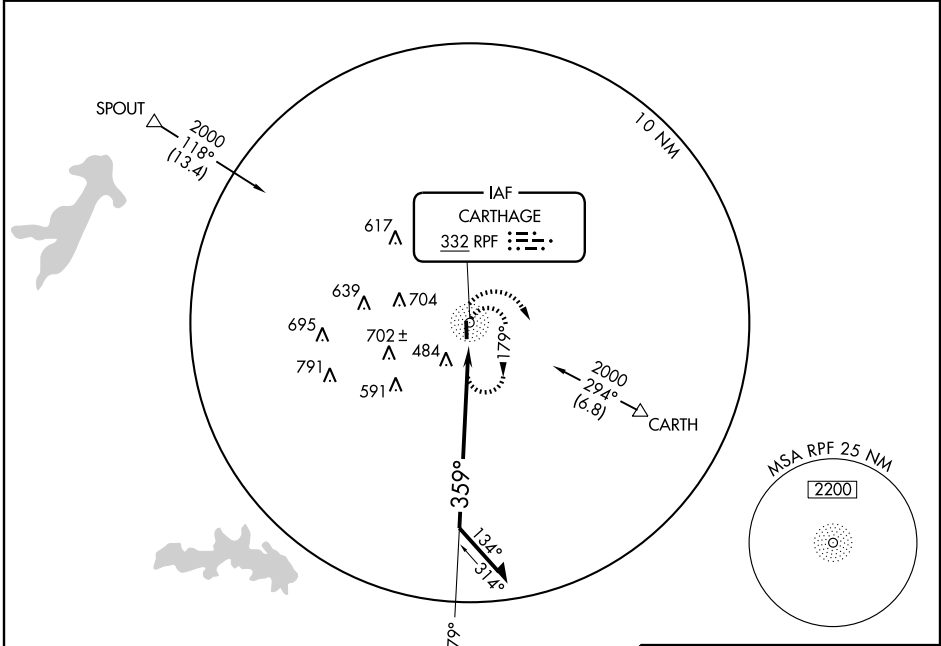
NDB RPF <b>332</b>	APP CRS <b>359°</b>	Rwy Idg TDZE Apt Elev	<b>4000</b> <b>248</b> <b>248</b>
-----------------------	------------------------	-----------------------------	---

**▲ NA** Use Shreveport Regional altimeter setting; when not received use East Texas Rgnl altimeter setting.

MISSED APPROACH: Climbing right turn to 2000 in RPF NDB holding pattern.

SHREVEPORT APP CON \*  
**119.9 335.55**

UNICOM  
**122.8 (CTAF) 0**



CATEGORY	A	B	C	D
S-35	1000-1 752 (800-1)	1000-1 1/4 752 (800-1 1/4)	1000-2 1/4 752 (800-2 1/4)	NA
CIRCLING	1000-1 752 (800-1)	1000-1 1/4 752 (800-1 1/4)	1000-2 1/4 752 (800-2 1/4)	NA

CARTHAGE, TEXAS  
Amdt 2 08325

CARTHAGE/ PANOLA COUNTY-SHARPE FIELD (4F2)  
32°11'N-94°18'W

# NDB RWY 35

SC-2, 22 OCT 2009 to 19 NOV 2009

SC-2, 22 OCT 2009 to 19 NOV 2009