

DECATUR, TEXAS

AL-6190 (FAA)

WAAS CH <b>40107</b> <b>W17A</b>	APP CRS <b>163°</b>	Rwy Idg <b>4200</b> TDZE <b>1047</b> Apt Elev <b>1047</b>
--	------------------------	---

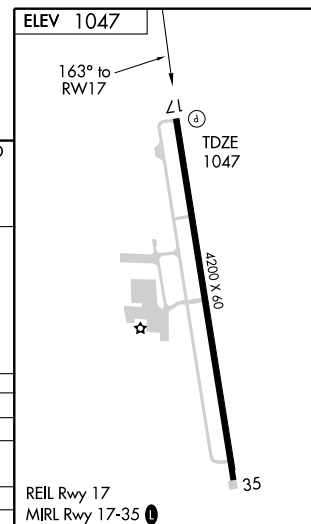
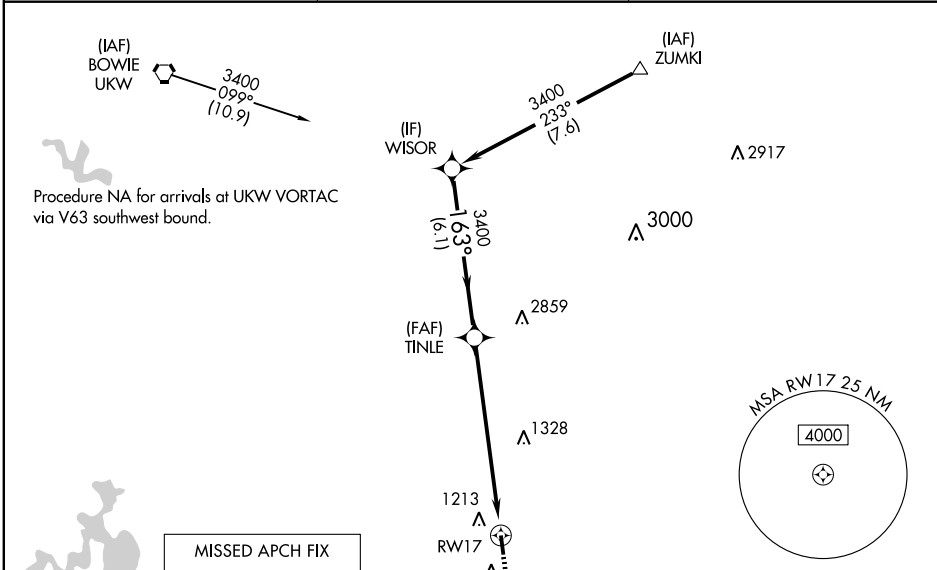
# RNAV (GPS) RWY 17

DECATUR MUNI (LUD)

- ▼ When local altimeter setting not received, use Fort Worth Meacham Intl altimeter setting and increase all DAs 113 feet, and all MDAs 120 feet, increase LPV visibilities ¼ mile, LNAV/VNAV visibilities ½ mile, and circling Cat B visibility ¼ mile. BARO-VNAV and VDP NA when using Fort Worth Meacham Intl altimeter setting. For uncompensated BARO-VNAV systems, LNAV/VNAV NA below -17°C (2°F) or above 54°C (130°F). DME/DME RNP-0.3 NA.
- ▲ MISSED APPROACH: Climb to 2600 direct HIRGO and hold.

MISSED APPROACH: Climb to 2600 direct HIRGO and hold.

AWOS-3 <b>118.225</b>	REGIONAL APP CON <b>118.1 306.95</b>	UNICOM <b>122.8(CTAF) 0</b>
--------------------------	---	--------------------------------



GS 3.00° TCH 45

Procedure Turn NA

WISOR TINLE

3400 163° 3400

\* 1.3 NM to RW17

\* LNAV only

CATEGORY	A	B	C	D
LPV DA	1297-1	250 (300-1)		NA
LNAV/VNAV DA	1459-1½	412 (500-1½)		NA
LNAV MDA	1560-1	513 (600-1)		NA
CIRCLING	1680-1	633 (700-1)		NA

DECATUR, TEXAS  
Orig 08325

33°15'N-97°35'W

# RNAV (GPS) RWY 17

SC-2, 22 OCT 2009 to 19 NOV 2009

SC-2, 22 OCT 2009 to 19 NOV 2009