

WINCHESTER, INDIANA

AL-6189 (FAA)

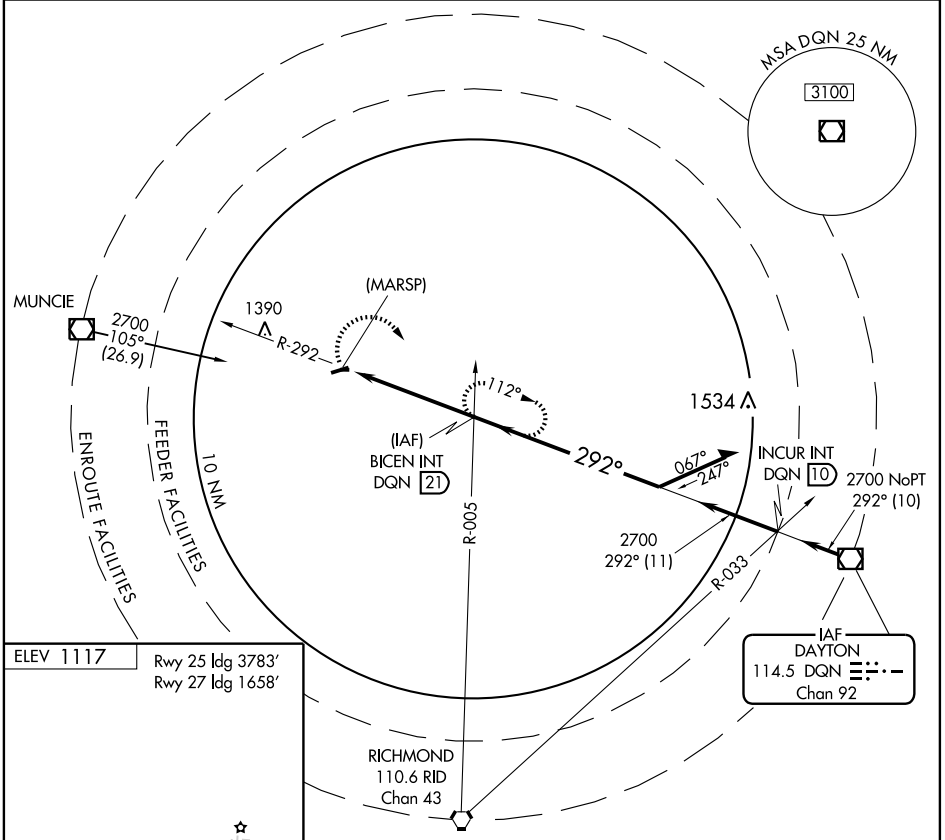
VOR/DME DQN 114.5 Chan 92	APP CRS 292°	Rwy Idg TDZE Apt Elev N/A N/A 1117
---	------------------------	--

VOR or GPS-A

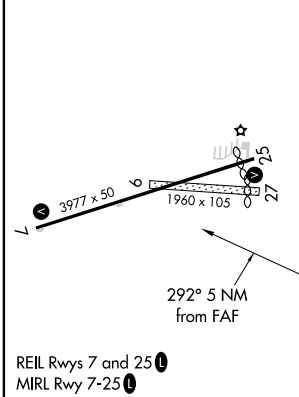
WINCHESTER/RANDOLPH COUNTY (I22)

▲ NA Use Dayton altimeter setting.	MISSED APPROACH: Climbing right turn to 2700 via DQN R-292 to BICEN Int/21 DME and hold.
---	--

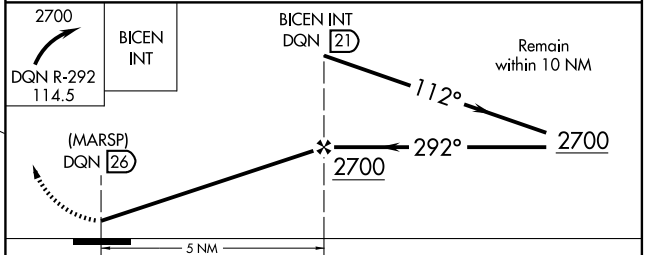
DAYTON APP CON 134.45 352.05	UNICOM 123.0 (CTAF) ☉
--	--



ELEV 1117	Rwy 25 Idg 3783'
	Rwy 27 Idg 1658'



REIL Rws 7 and 25 **Ⓛ**
MIRL Rwy 7-25 **Ⓛ**



FAF to MAP 5 NM					
Knots	60	90	120	150	180
Min:Sec	5:00	3:20	2:30	2:00	1:40
CATEGORY	A	B	C	D	
CIRCLING	1720-1 602 (700-1)	1720-1¼ 602 (700-1¼)	1720-1½ 602 (700-1½)	NA	

WINCHESTER, INDIANA
Amdt 8 09183

40°10'N-84°56'W

WINCHESTER/RANDOLPH COUNTY (I22)

VOR or GPS-A

EC-2, 22 OCT 2009 to 19 NOV 2009

EC-2, 22 OCT 2009 to 19 NOV 2009