

RNAV (GPS) RWY 14

WESTMINSTER / CLEARVIEW AIRPARK (2W2)

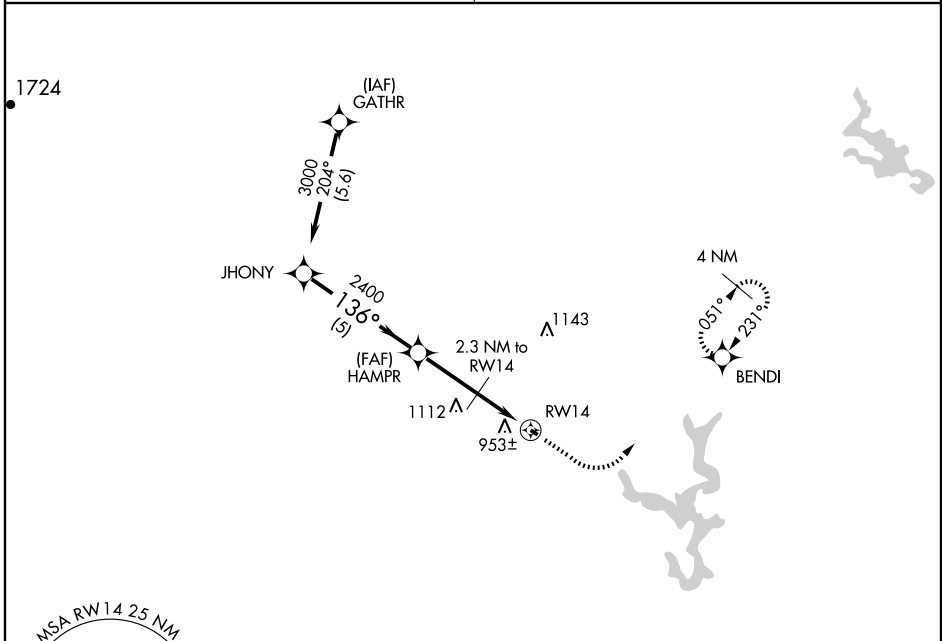
APP CRS 136°	Rwy Idg 1510
	TDZE 799
	Apt Elev 799

NA Use Carroll County Rgnl/Jack B. Poage Field altimeter setting. GPS or RNP-0.3 required. DME/DME RNP-0.3 NA.

MISSED APPROACH: Climb to 1500, then climbing left turn to 3000 direct BENDI WP and hold.

POTOMAC APP CON
125.525 291.625

UNICOM
122.8 (CTAF)



NE-3, 22 OCT 2009 to 19 NOV 2009

NE-3, 22 OCT 2009 to 19 NOV 2009

