

**RNAV (GPS) RWY 7**  
 SPARTA / PAUL C. MILLER - SPARTA (8D4)

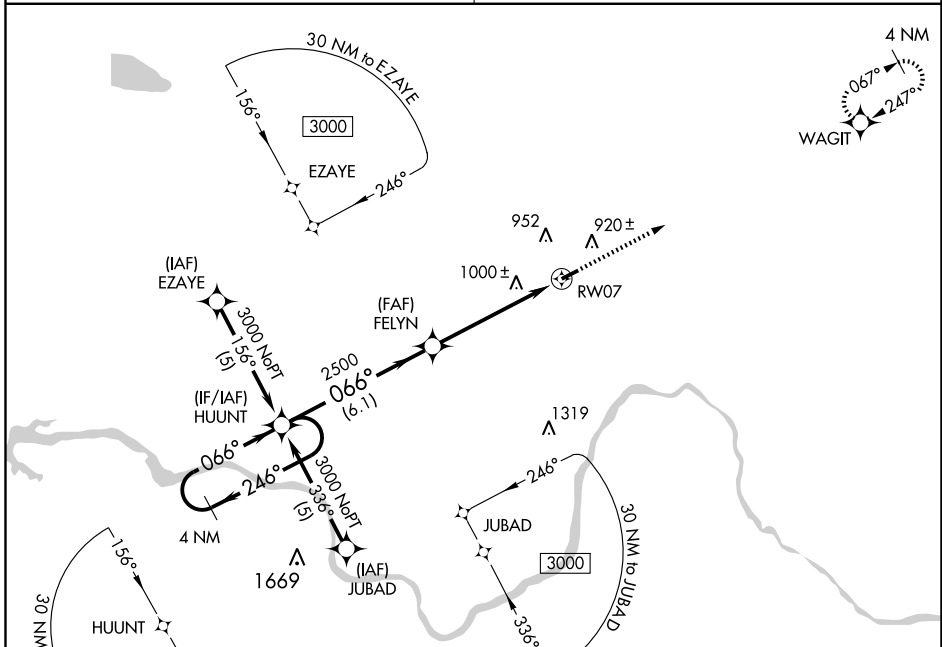
APP CRS	Rwy Idg	<b>4033</b>
<b>066°</b>	TDZE	<b>775</b>
	Apt Elev	<b>775</b>

**⚠** DME/DME RNP-0.3 NA. Visibility reduction by helicopters NA.  
**⚠** When local altimeter setting not received, use Grand Rapids altimeter setting and increase all MDA 60 feet.

**MISSED APPROACH:** Climb to 3000 direct WAGIT and hold.

GRAND RAPIDS APP CON ★  
**124.6 257.6**

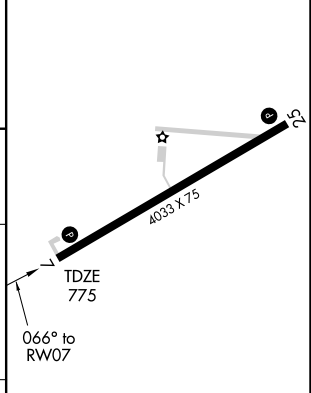
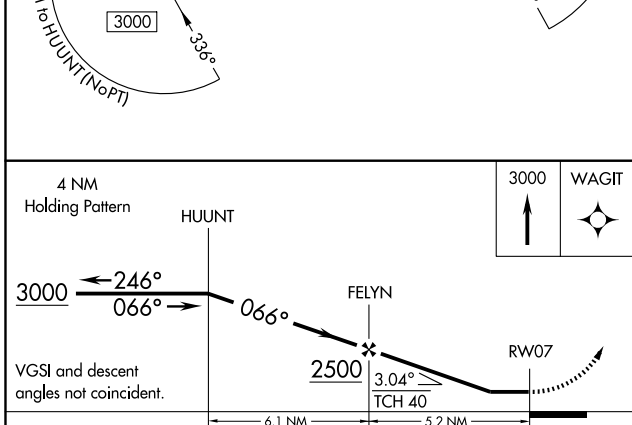
UNICOM  
**122.8 (CTAF) ①**



EC-1, 22 OCT 2009 to 19 NOV 2009

EC-1, 22 OCT 2009 to 19 NOV 2009

ELEV 775



CATEGORY	A	B	C	D
LNAV MDA	1340-1	565 (600-1)		NA
CIRCLING	1340-1	565 (600-1)		NA

MIRL Rwy 7-25 ①  
 REIL Rwy 7 and 25