

RNAV (GPS) RWY 25

SPARTA / PAUL C. MILLER - SPARTA (8D4)

APP CRS	Rwy Idg	4033
247°	TDZE	775
	Apt Elev	775

▽ DME/DME RNP-0.3 NA. Visibility reduction by helicopters NA.
▲ When local altimeter setting not received, use Grand Rapids altimeter setting and increase all MDA 60 feet.

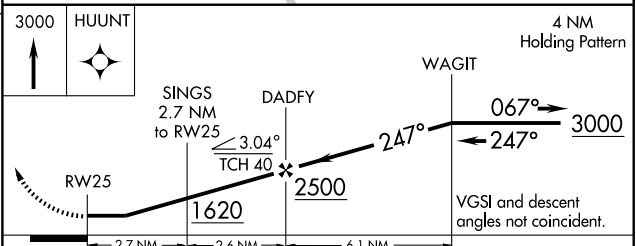
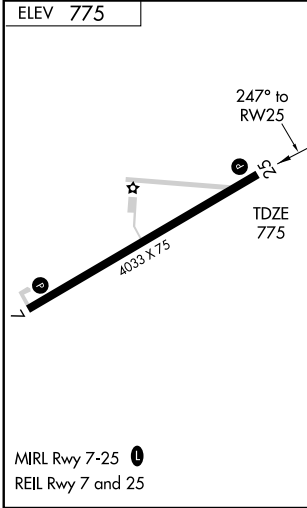
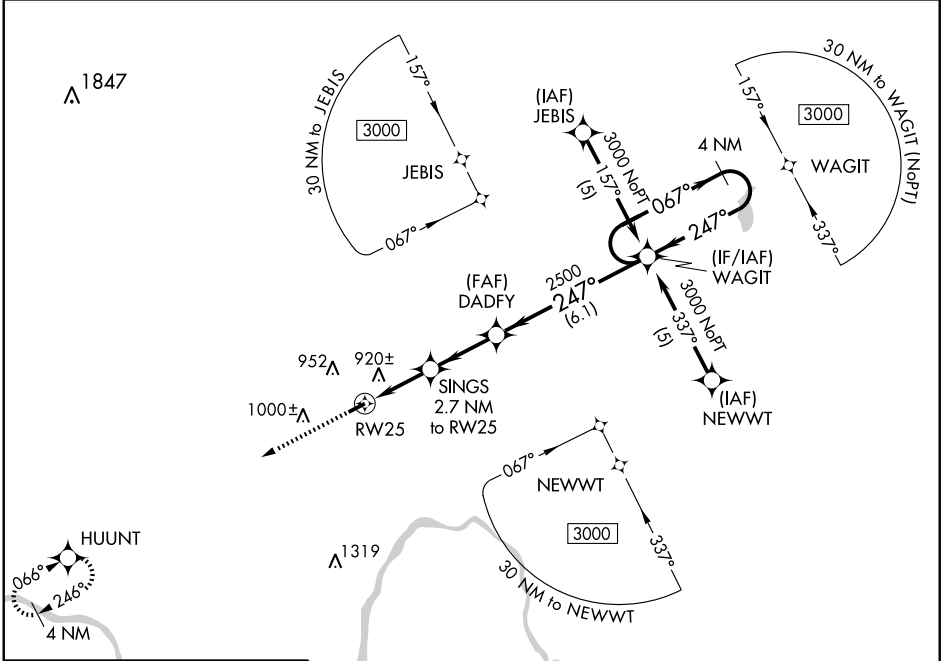
MISSED APPROACH: Climb to 3000 direct HUUNT and hold.

GRAND RAPIDS APP CON ★
124.6 257.6

UNICOM
122.8 (CTAF) 0

EC-1, 22 OCT 2009 to 19 NOV 2009

EC-1, 22 OCT 2009 to 19 NOV 2009



CATEGORY	A	B	C	D
LNAV MDA	1220-1	445 (500-1)	NA	
CIRCLING	1280-1 505 (600-1)	1320-1 545 (600-1)	NA	

RNAV (GPS) RWY 25