

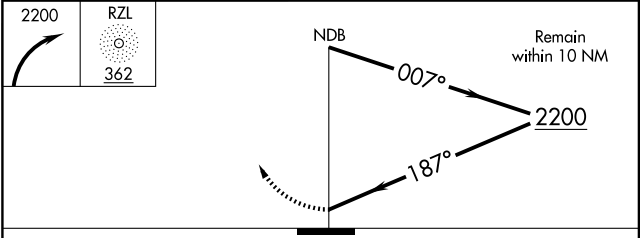
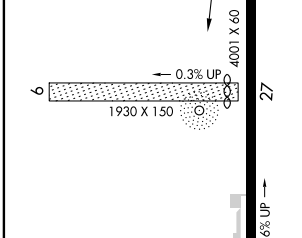
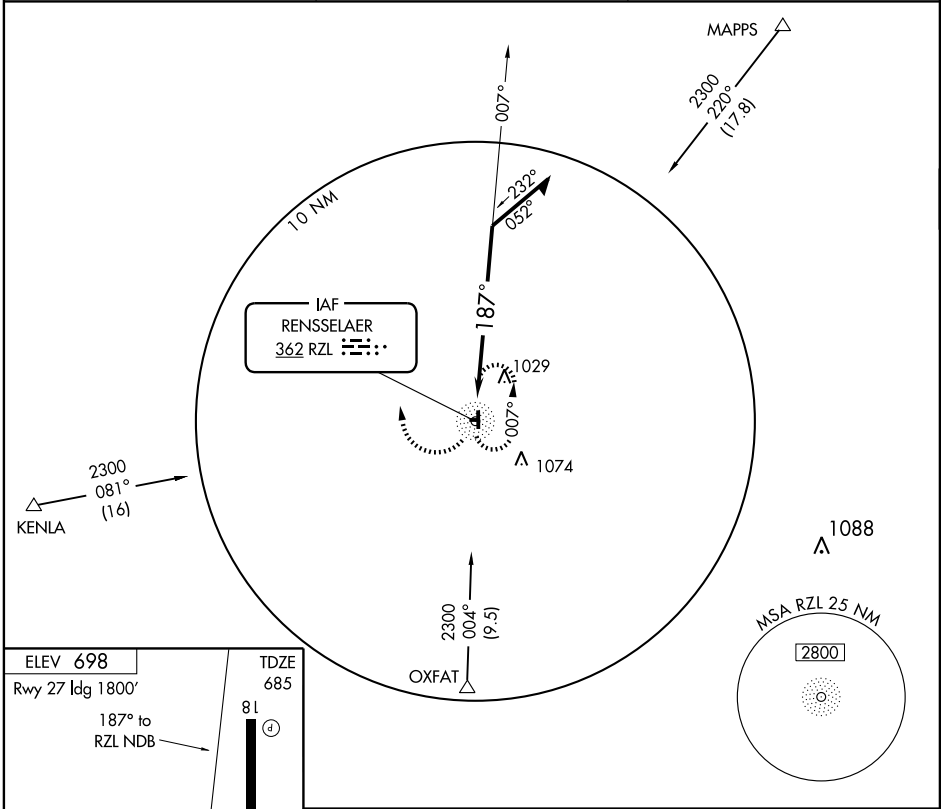
# NDB RWY 18

RENSELAER/JASPER COUNTY (R.ZL)

NDB RZL <b>362</b>	APP CRS <b>187°</b>	Rwy Idg <b>4001</b>
		TDZE <b>685</b>
		Apt Elev <b>698</b>

**▼** Use Lafayette, IN altimeter setting.  
**▲ NA** MISSED APPROACH: Climbing right turn to 2200 direct to RZL NDB and hold.

AWOS-3 <b>119.175</b>	CHICAGO CENTER <b>132.95 272.7</b>	UNICOM <b>122.8 (CTAF)</b>
--------------------------	---------------------------------------	-------------------------------



CATEGORY	A	B	C	D
S-18	1500-1 815 (900-1)	1500-1¼ 815 (900-1¼)	1500-2½ 815 (900-2½)	NA
CIRCLING	1500-1 815 (900-1)	1500-1¼ 815 (900-1¼)	1520-2½ 835 (900-2½)	NA

# NDB RWY 18

EC-2, 22 OCT 2009 to 19 NOV 2009

EC-2, 22 OCT 2009 to 19 NOV 2009