

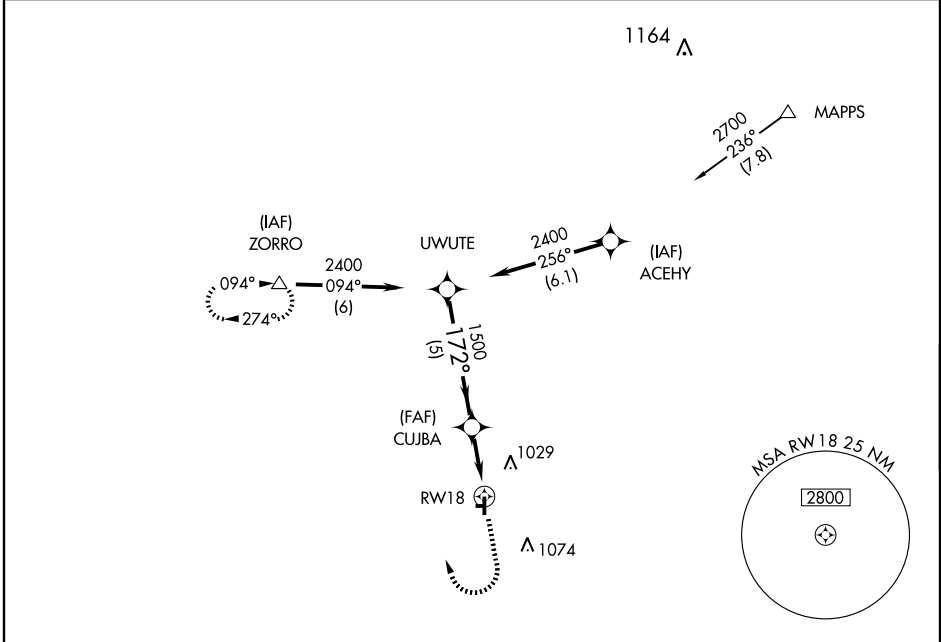
# GPS RWY 18

RENSELAER/ JASPER COUNTY (R,Z,L)

APP CRS <b>172°</b>	Rwy Idg <b>4001</b>
	TDZE <b>698</b>
	Apt Elev <b>698</b>

<p><b>▼</b> When local altimeter setting not received, use Lafayette, IN altimeter setting.</p> <p><b>▲</b> NA</p>	<p>MISSED APPROACH: Climb to 1800, then climbing right turn to 2400 direct ZORRO and hold.</p>
--	--

<p>AWOS-3 <b>119.175</b></p>	<p>CHICAGO CENTER <b>132.95 272.7</b></p>	<p>UNICOM <b>122.8 (CTAF)</b></p>
----------------------------------	---	---------------------------------------



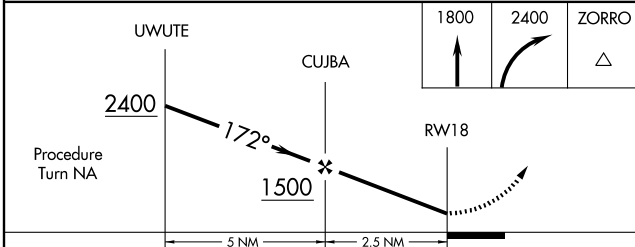
EC-2, 22 OCT 2009 to 19 NOV 2009

EC-2, 22 OCT 2009 to 19 NOV 2009



ELEV 698
Rwy 27 Idg 1800'
172° to RWY 18
81
TDZE 698
4001 X 60
27
0.6% UP
36

MIRL Rwy 18-36



CATEGORY	A	B	C	D
S-18	1260-1	562 (600-1)	1260-1½ 562 (600-1½)	NA
CIRCLING	1260-1 562 (600-1)	1440-1¼ 742 (800-1¼)	1440-2¼ 742 (800-2¼)	NA

# GPS RWY 18