

MONROE CITY, MISSOURI

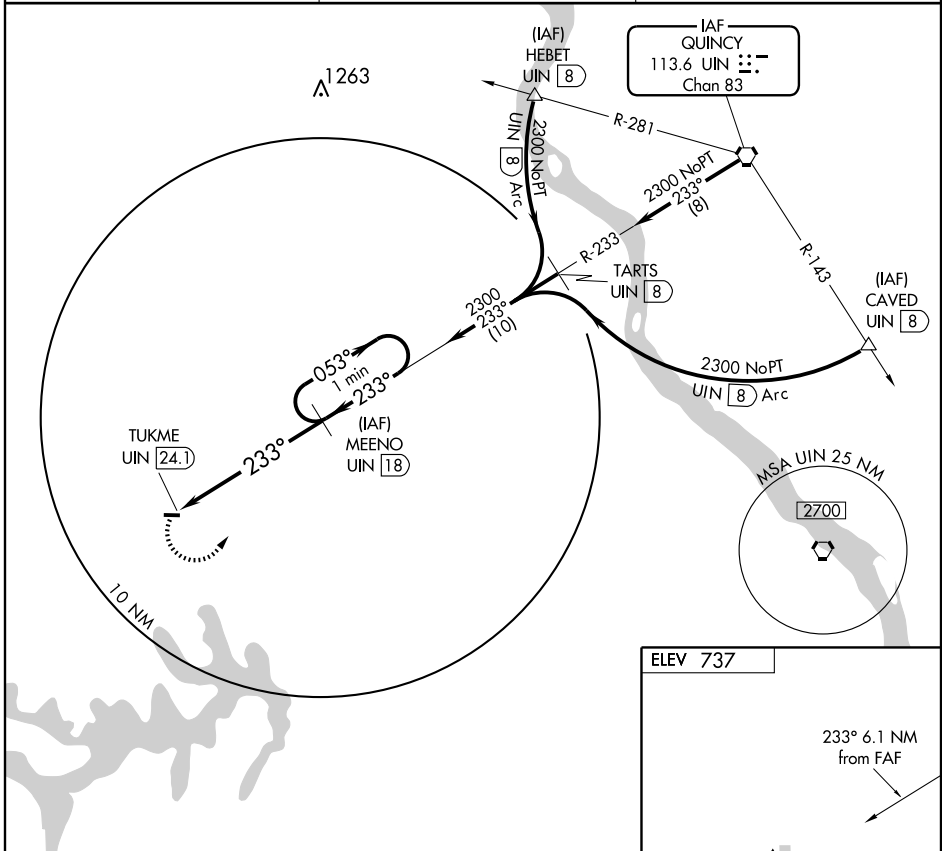
AL-6183 (FAA)

VORTAC UIN <b>113.6</b> Chan <b>83</b>	APP CRS <b>233°</b>	Rwy Idg TDZE Apt Elev	<b>N/A</b> <b>N/A</b> <b>737</b>
--	------------------------	-----------------------------	--

**VOR/DME-A**  
MONROE CITY/ CAPT. BEN SMITH AIRFIELD-MONROE CITY (K52)

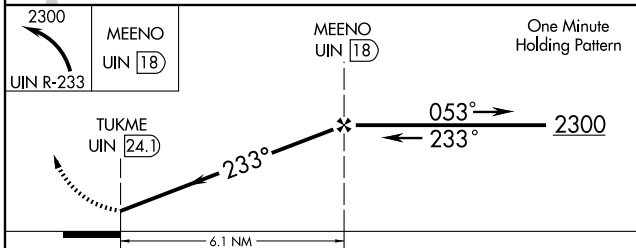
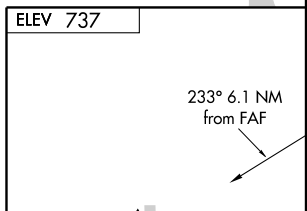
<b>NA</b>	Use Quincy, IL altimeter setting.	MISSED APPROACH: Climbing left turn to 2300 via UIN R-233 to MEENO/18 DME and hold.
-----------	-----------------------------------	---

QUINCY ASOS <b>121.425</b>	KANSAS CITY CENTER <b>135.525 319.9</b>	UNICOM <b>122.8 (CTAF)</b>
-------------------------------	--	-------------------------------



NC-3, 22 OCT 2009 to 19 NOV 2009

NC-3, 22 OCT 2009 to 19 NOV 2009



CATEGORY	A	B	C	D
CIRCLING	1380-1 643 (700-1)	1380-1¼ 643 (700-1¼)	1380-1½ 643 (700-1½)	NA

ELEV 737

REIL Rwy 27  
MIRL Rwy 9-27

MONROE CITY, MISSOURI  
Amdt 2 09071

MONROE CITY/ CAPT. BEN SMITH AIRFIELD-MONROE CITY (K52)  
39°38'N-91°44'W

**VOR/DME-A**