

RNAV (GPS) RWY 11

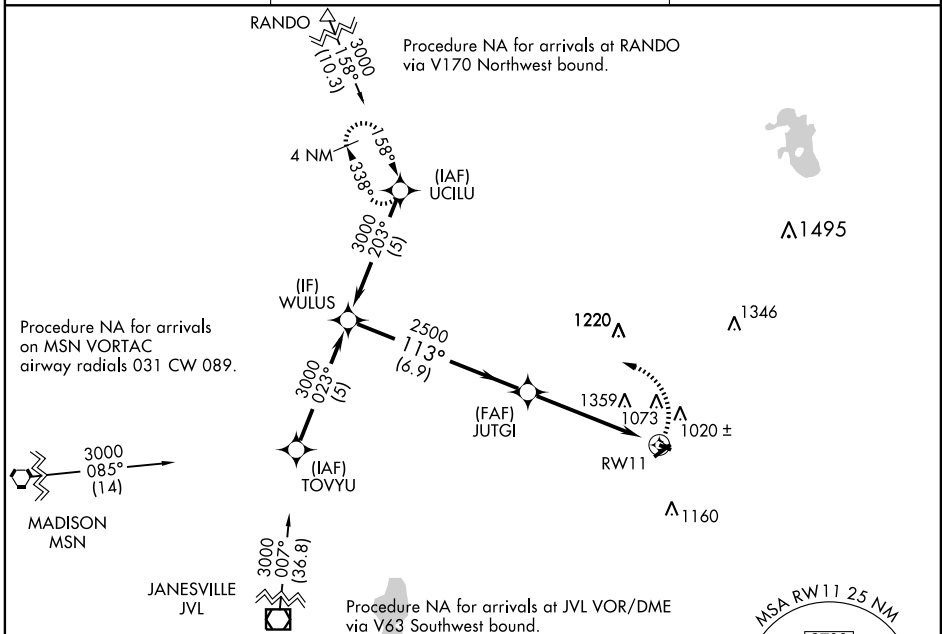
WATERTOWN MUNI (RYV)

APP CRS	Rwy Idg	2801
113°	TDZE	833
	Apt Elev	833

⚠ DME/DME RNP-0.3 NA When local altimeter setting not received, use Dodge County altimeter setting and increase all MDA 60 feet, increase LNAV visibility Cat. C and D ¼ mile, increase Circling visibility Cat. C ¼ mile. VDP NA when using Dodge County altimeter setting. Circling to Rwy 5/23 NA at night.

MISSED APPROACH: Climbing left turn to 3000 direct UCILU and hold.

AWOS-3 119.975	MADISON APP CON * 119.15 343.7	UNICOM 122.8 (CTAF) 0
--------------------------	--	---------------------------------



EC-3, 22 OCT 2009 to 19 NOV 2009

EC-3, 22 OCT 2009 to 19 NOV 2009

