

# VOR RWY 4

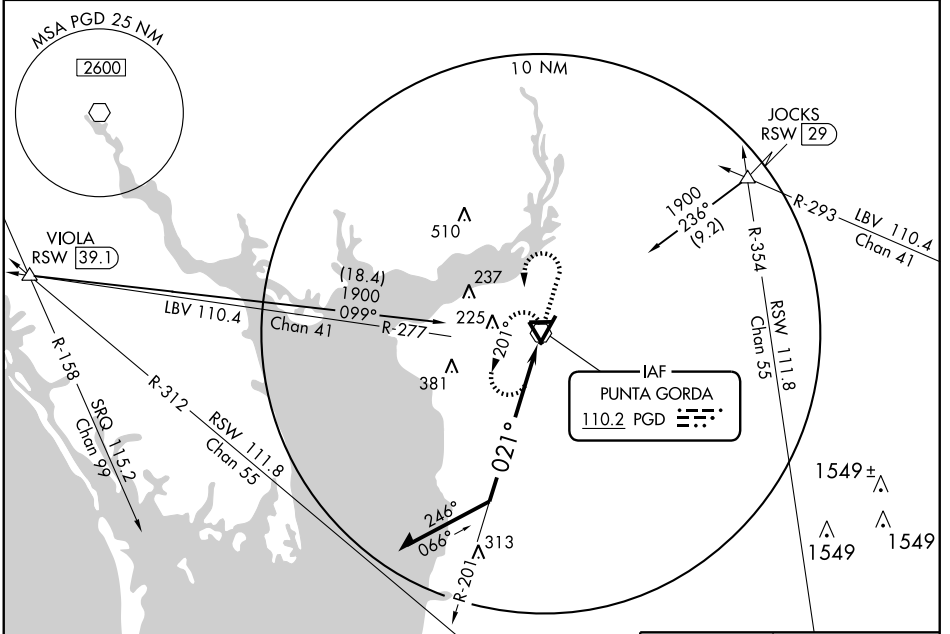
PUNTA GORDA/ CHARLOTTE COUNTY (PGD)

VOR PGD <b>110.2</b>	APP CRS <b>021°</b>	Rwy Idg <b>7193</b>
		TDZE <b>24</b>
		Apt Elev <b>26</b>

**⚠** When local altimeter setting not received, use Page Field altimeter setting and increase all MDAs 60 feet; increase all Cats C/D visibilities ¼ mile.  
**⚠** Visibility reduction by helicopters NA.

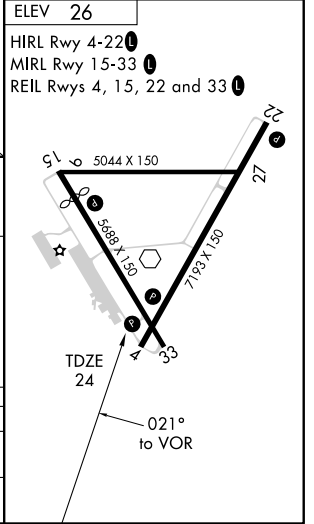
MISSED APPROACH: Climb to 1100 then climbing left turn to 1600 direct PGD VOR and hold.

ASOS <b>135.675</b>	FORT MYERS APP CON★ <b>126.8 385.45</b>	CLNC DEL <b>127.05</b>	UNICOM <b>122.975 (CTAF) 0</b>
------------------------	--	---------------------------	-----------------------------------



SE-3, 22 OCT 2009 to 19 NOV 2009

SE-3, 22 OCT 2009 to 19 NOV 2009



CATEGORY	A	B	C	D
S-4	680-1	656 (700-1)	680-1¾ 656 (700-1¾)	680-2 656 (700-2)
CIRCLING	680-1	654 (700-1)	680-1¾ 654 (600-1¾)	680-2 654 (700-2)