

VOR RWY 22

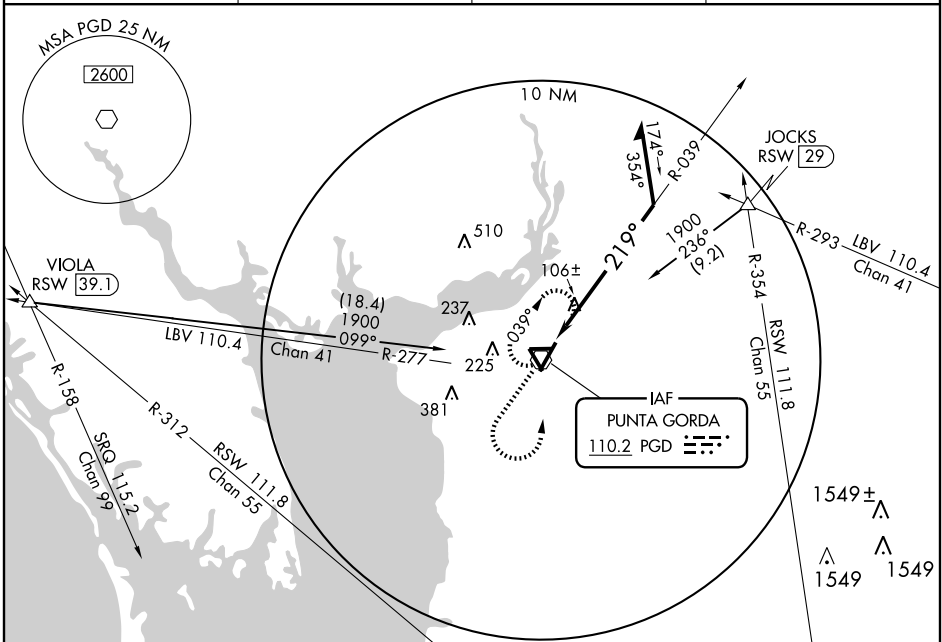
PUNTA GORDA/CHARLOTTE COUNTY (PGD)

VOR PGD 110.2	APP CRS 219°	Rwy Idg TDZE Apt Elev	7193 26 26
-------------------------	------------------------	-----------------------------	---------------------------------------

▼ When local altimeter setting not received, use Page Field altimeter setting and increase all MDAs 60 feet, and increase Circling Cat C visibility to 1 3/4 mile. Visibility reduction by helicopters NA.

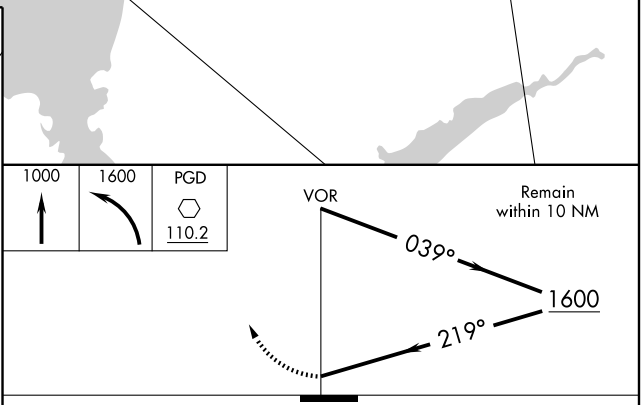
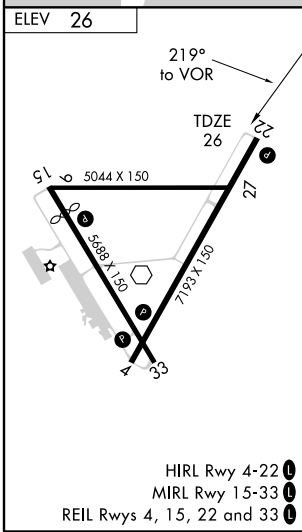
▲ MISSED APPROACH: Climb to 1000 then climbing left turn to 1600 direct PGD VOR and hold, continue climb-in-hold to 1600.

ASOS 135.675	FORT MYERS APP CON★ 126.8 385.45	CLNC DEL 127.05	UNICOM 122.975 (CTAF) 0
------------------------	--	---------------------------	-----------------------------------



SE-3, 22 OCT 2009 to 19 NOV 2009

SE-3, 22 OCT 2009 to 19 NOV 2009



CATEGORY	A	B	C	D
S-22	460-1	434 (500-1)	460-1 1/4 434 (500-1 1/4)	460-1 1/2 434 (500-1 1/2)
CIRCLING	460-1 434 (500-1)	580-1 554 (600-1)	580-1 1/2 554 (600-1 1/2)	580-2 554 (600-2)

VOR RWY 22