

PUNTA GORDA, FLORIDA

AL-6178 (FAA)

| | | | |
|--|------------------------|---|-------------|
| WAAS CH 48807 W04A | APP CRS 032° | Rwy Idg TDZE 24 Apt Elev 26 | 7193 |
|--|------------------------|---|-------------|

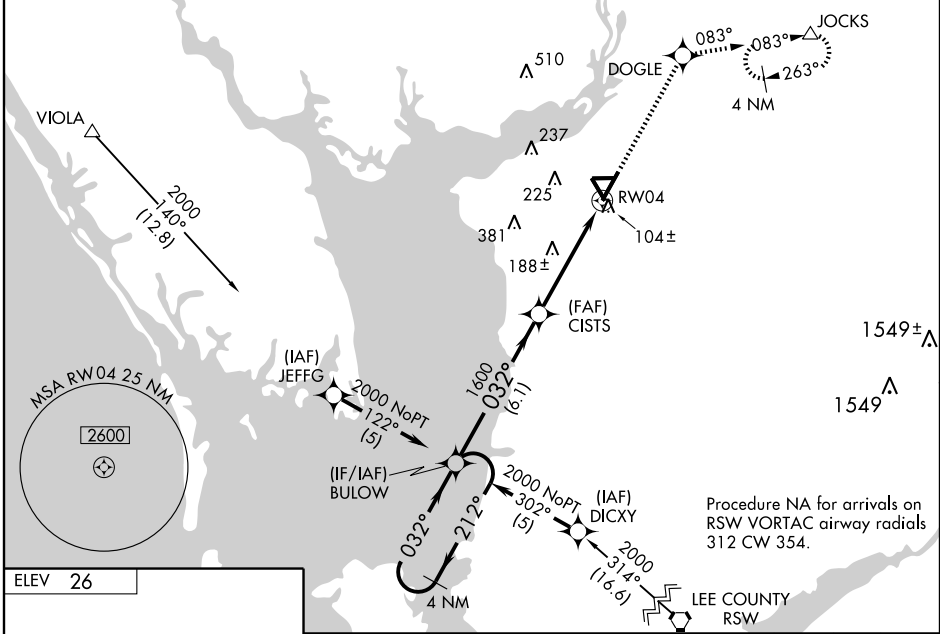
RNAV (GPS) RWY 4

PUNTA GORDA/ CHARLOTTE COUNTY (PGD)

⚠ When local altimeter setting not received, use Page Field altimeter setting and increase all DAs 50 feet and all MDAs 60 feet; increase LNAV/VNAV all Cats visibility and LNAV Cats C/D visibility and Circling Cat C visibility ¼ mile. Baro-VNAV NA when using Page Field altimeter setting. For uncompensated Baro-VNAV systems, LNAV/VNAV NA below -15°C (5°F) or above 48°C (118°F). Visibility reduction by helicopters NA. DME/DME RNP-0.3 NA.

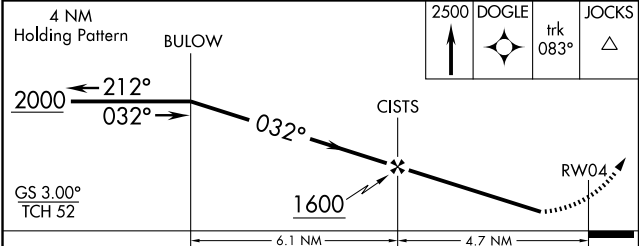
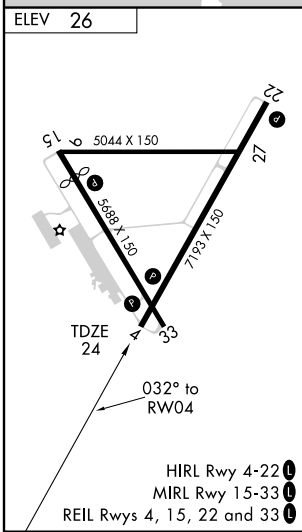
MISSED APPROACH: Climb to 2500 direct DOGLE and via 083° track to JOCKS and hold, continue climb-in-hold to 2500.

| | | | |
|------------------------|--|---------------------------|--|
| ASOS 135.675 | FORT MYERS APP CON★ 126.8 385.45 | CINC DEL 127.05 | UNICOM 122.975 (CTAF) 0 |
|------------------------|--|---------------------------|--|



SE-3, 22 OCT 2009 to 19 NOV 2009

SE-3, 22 OCT 2009 to 19 NOV 2009



| CATEGORY | A | B | C | D |
|--------------|----------------------|----------------------|------------------------|------------------------|
| LPV DA | 274-1 | | 250 (300-1) | |
| LNAV/VNAV DA | 452-1½ | | 428 (500-1½) | |
| LNAV MDA | 500-1 | 476 (500-1) | 500-1¼ 476 (500-1¼) | 500-1½ 476 (500-1½) |
| CIRCLING | 500-1 474 (500-1) | 580-1 554 (600-1) | 580-1½ 554 (600-1½) | 580-2 554 (600-2) |

PUNTA GORDA, FLORIDA
Orig-A 09295

26°55'N-81°59'W

RNAV (GPS) RWY 4