

RNAV (GPS) RWY 33

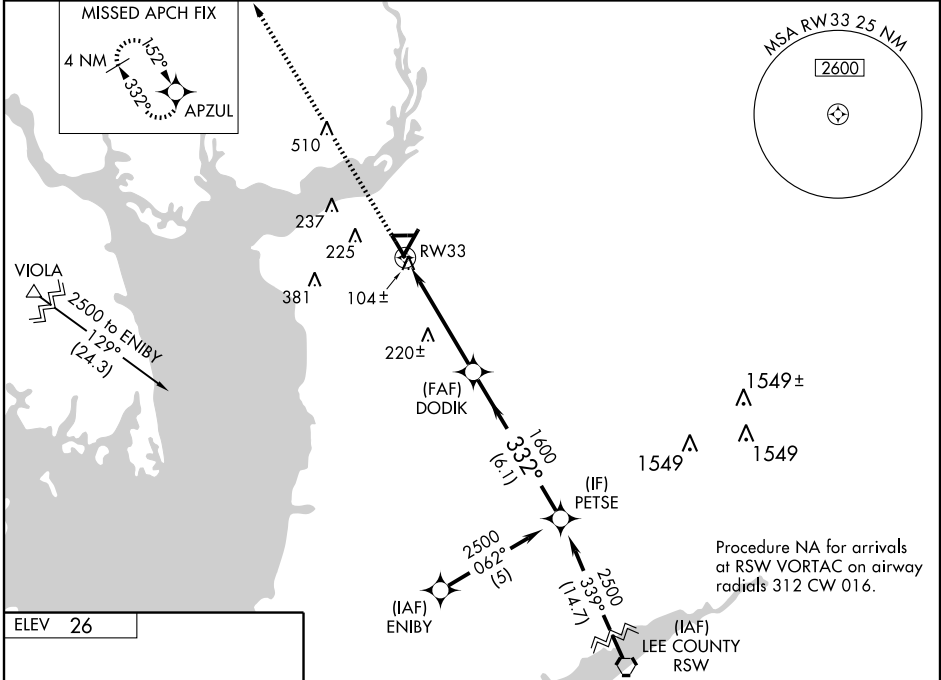
PUNTA GORDA/CHARLOTTE COUNTY (PGD)

WAAS CH 93507 W33A	APP CRS 332°	Rwy Idg TDZE Apt Elev	5688 23 26
--	------------------------	-----------------------------	---------------------------------------

⚠ When local altimeter setting not received, use Page Field altimeter setting and increase all DAs 50 feet and all MDAs 60 feet; increase all LPV and LNAV/VNAV visibilities ¼, increase LNAV Cats C/D visibility ¼, and increase Circling Cat C visibility ¼. Baro-VNAV NA when using Page Field altimeter setting. For uncompensated Baro-VNAV systems, LNAV/VNAV NA below -15°C (5°F) or above 48°C (118°F). DME/DME RNP-0.3 NA. Visibility reduction by helicopters NA.

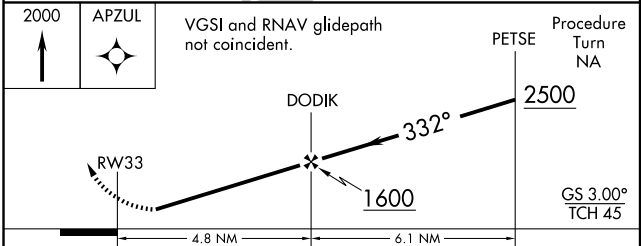
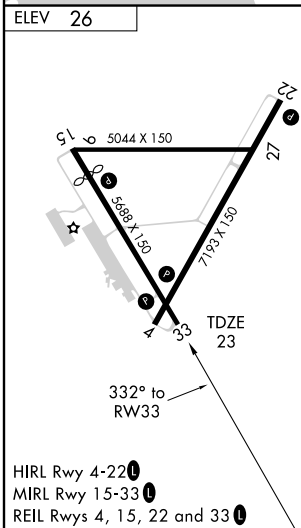
MISSED APPROACH:
Climb to 2000 direct APZUL and hold.

ASOS 135.675	FORT MYERS APP CON★ 126.8 385.45	CLNC DEL 127.05	UNICOM 122.975 (CTAF) ①
------------------------	--	---------------------------	--



SE-3, 22 OCT 2009 to 19 NOV 2009

SE-3, 22 OCT 2009 to 19 NOV 2009



CATEGORY	A	B	C	D
LPV DA	315-1		292 (300-1)	
LNAV/VNAV DA	374-1¼		351 (400-1¼)	
LNAV MDA	520-1	497 (500-1)	520-1¼ 497 (500-1¼)	520-1½ 497 (500-1½)
CIRCLING	520-1 494 (500-1)	580-1 554 (600-1)	580-1½ 554 (600-1½)	580-2 554 (600-2)

RNAV (GPS) RWY 33