

WAAS CH <b>45905</b> <b>W22A</b>	APP CRS <b>212°</b>	Rwy Idg TDZE Apt Elev	<b>7193</b> <b>26</b> <b>26</b>
--	------------------------	-----------------------------	---------------------------------------

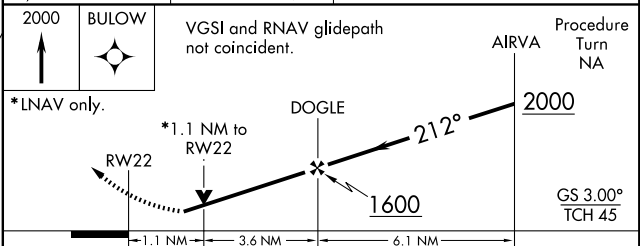
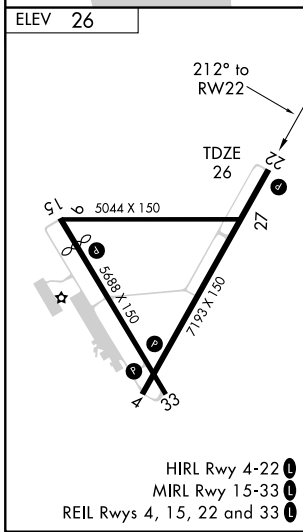
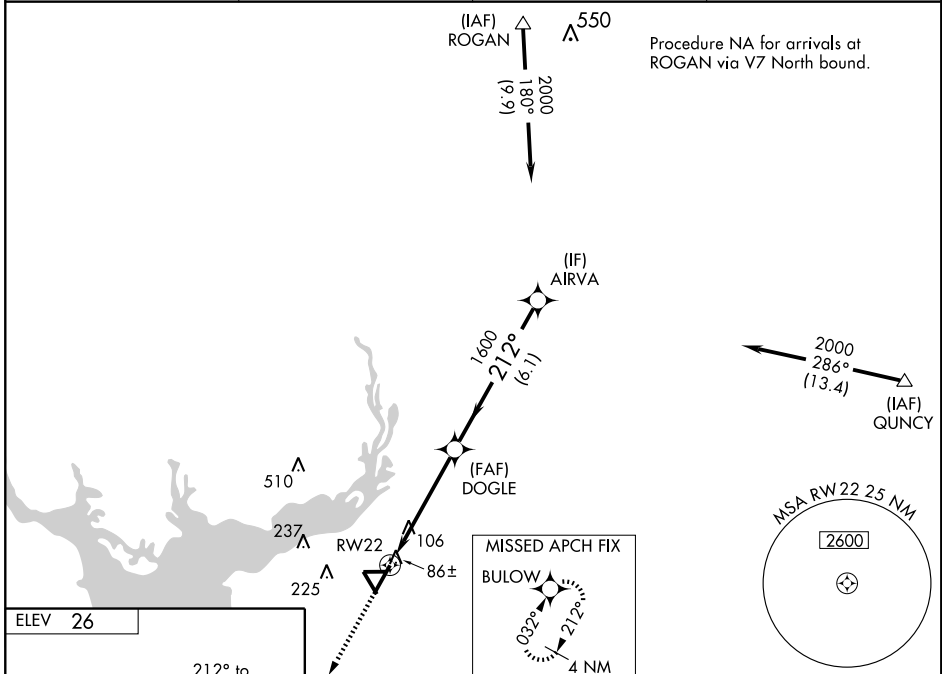
# RNAV (GPS) RWY 22

PUNTA GORDA/ CHARLOTTE COUNTY (PGD)

**⚠** When local altimeter setting not received, use Page Field altimeter setting and increase all DAs 50 feet and all MDAs 60 feet; increase LNAV Cats C/D and Circling Cat C visibility ¼ mile. Baro-VNAV and VDP NA when using Page Field altimeter setting. For uncompensated Baro-VNAV systems, LNAV/VNAV NA below -15°C (5°F) or above 48°C (118°F). DME/DME RNP-0.3 NA. Visibility reduction by helicopters NA.

MISSED APPROACH:  
Climb to 2000 direct  
BULOW and hold.

ASOS <b>135.675</b>	FORT MYERS APP CON* <b>126.8 385.45</b>	CLINC DEL <b>127.05</b>	UNICOM <b>122.975 (CTAF) 0</b>
------------------------	--	----------------------------	-----------------------------------



CATEGORY	A	B	C	D
LPV DA	276-1		250 (300-1)	
LNAV/VNAV DA	356-1¼		330 (400-1¼)	
LNAV MDA	420-1		394 (400-1)	
	420-1		420-1¼	
	394 (400-1)		394 (400-1¼)	
CIRCLING	420-1 394 (400-1)	580-1 554 (600-1)	580-1½ 554 (600-1½)	580-2 554 (600-2)

SE-3, 22 OCT 2009 to 19 NOV 2009

SE-3, 22 OCT 2009 to 19 NOV 2009