

PENN YAN, NEW YORK

AL-6175 (FAA)

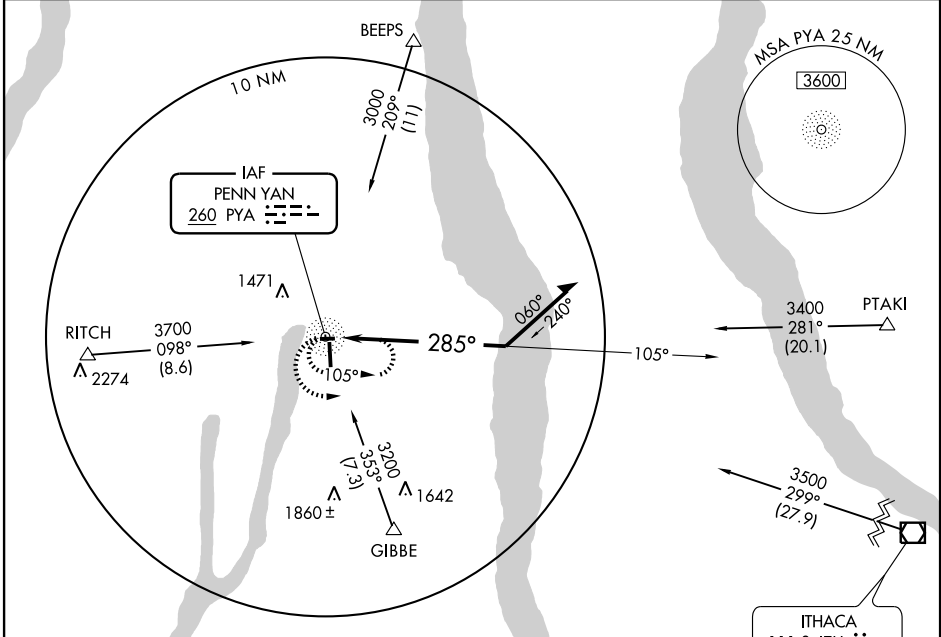
# NDB RWY 28

PENN YAN (P/E/O)

NDB PYA <b>260</b>	APP CRS <b>285°</b>	Rwy ldg <b>3177</b> TDZE <b>901</b> Apt Elev <b>990</b>
-----------------------	------------------------	---

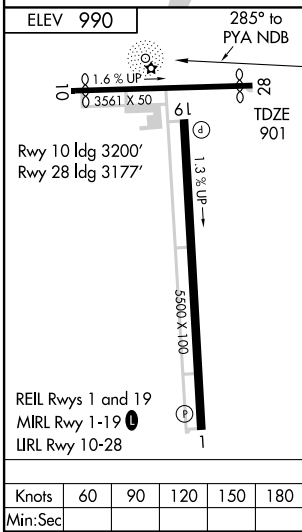
<p>▼ ▲ NA</p>	<p>MISSED APPROACH: Climbing left turn to 3000 in PYA NDB holding pattern.</p>
-------------------	--

<p>ASOS <b>121.175</b></p>	<p>ELMIRA APP CON* <b>124.3 257.8</b></p>	<p>UNICOM <b>123.0 (CTAF) 0</b></p>
--------------------------------	---	---



NE-2, 22 OCT 2009 to 19 NOV 2009

NE-2, 22 OCT 2009 to 19 NOV 2009



3000	PYA	NDB	Remain within 10 NM
260			

CATEGORY	A	B	C	D
S-28	1600-1 699 (700-1)		1600-2 699 (700-2)	1600-2¼ 699 (700-2¼)
CIRCLING	1600-1 610 (700-1)		1680-2 690 (700-2)	1780-2½ 790 (800-2½)

PENN YAN, NEW YORK  
Amdt 6B 06299

42°38'N - 77°03'W

# NDB RWY 28

PENN YAN (P/E/O)