

VORTAC ELW 108.6 Chan 23	APP CRS 010°	Rwy Idg TDZE Apt Elev	N/A N/A 1012
--	------------------------	-----------------------------	---

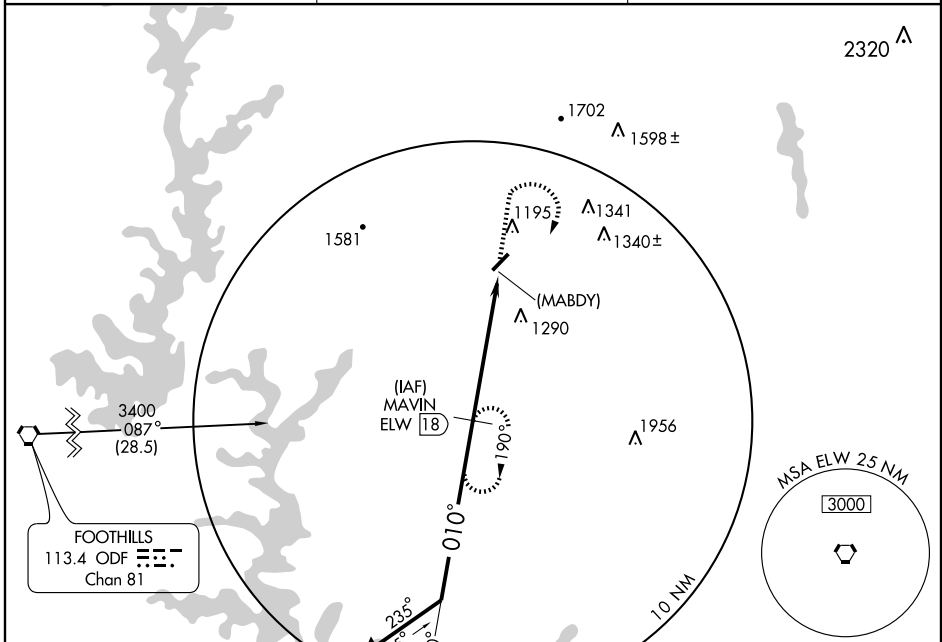
VOR/DME or GPS-A

PICKENS COUNTY (LQK)

▲ NA If local altimeter setting not received, use Anderson altimeter setting and increase all MDAs 80 feet.

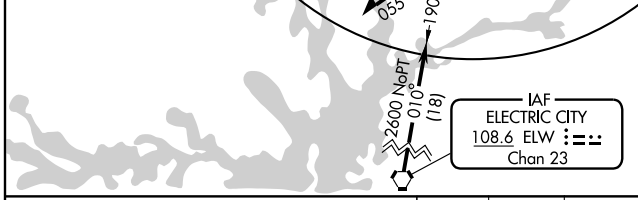
MISSED APPROACH: Climb to 2200 then climbing right turn to 3000 direct MAVIN ELW 18 DME and hold.

AWOS-3 120.0	GREER APP CON * 118.8 385.4	UNICOM 122.8 (CTAF) 0
------------------------	---------------------------------------	---------------------------------

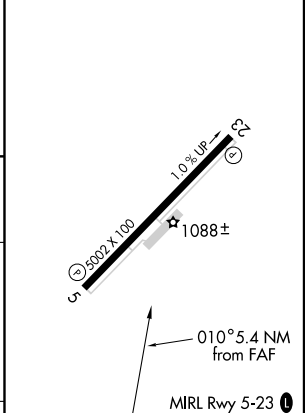


SE-2, 22 OCT 2009 to 19 NOV 2009

SE-2, 22 OCT 2009 to 19 NOV 2009



ELEV 1012



Remain within 10 NM	MAVIN ELW 18	2200	3000	MAVIN ELW 18
3000	190°			
	010°			
2600				
		(MABDY) ELW 23.4		
		5.4 NM		

CATEGORY	A	B	C	D	Knots	60	90	120	150	180
CIRCLING	1620-1 608 (700-1)	1620-1¼ 608 (700-1¼)	1620-1¾ 608 (700-1¾)	1660-2 648 (700-2)	Min:Sec					