

VOR RWY 28

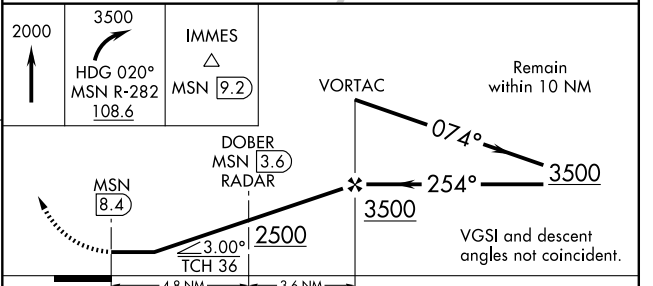
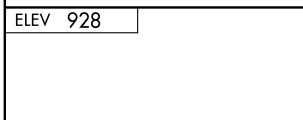
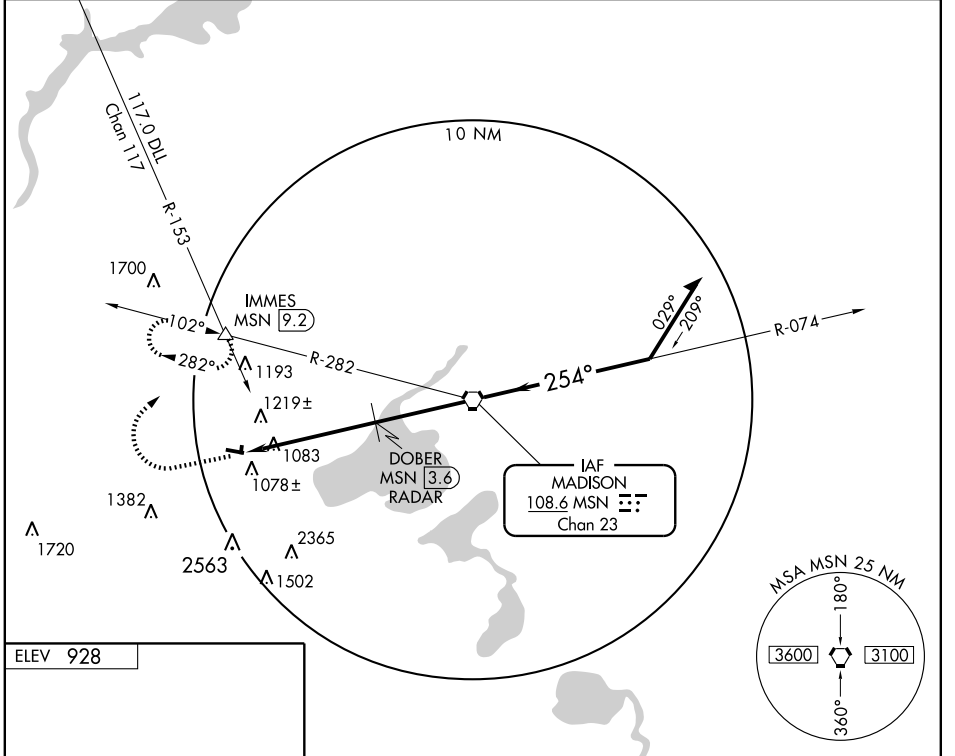
MIDDLETON MUNI - MOREY FIELD (C29)

VORTAC MSN 108.6 Chan 23	APP CRS 254°	Rwy Idg TDZE Apt Elev	4000 928 928
--	------------------------	-----------------------------	---

NA Use Dane County Rgnl-Truax Field altimeter setting, if not received use Baraboo Wisconsin Dells altimeter setting and increase all MDAs 60 feet. RADAR or DME REQUIRED.

MISSED APPROACH: Climb to 2000 then climbing right turn to 3500 via heading 020° and MSN R-282 to IMMES Int/9.2 DME and hold.

DANE COUNTY RGNL ATIS 124.65 278.3	MADISON APP CON* 135.45 343.7	GCO 121.725	UNICOM 123.0 (CTAF) 0
--	---	-----------------------	--



MIRL Rwy 10-28 **0**
REIL Rwys 10 and 28 **0**
FAF to MAP 8.4 NM

Knots	60	90	120	150	180
Min:Sec	8:24	5:36	4:12	3:22	2:48

CATEGORY	A	B	C	D
S-28	1500-1	572 (600-1)	1500-1½ 572 (600-1½)	NA
CIRCLING	1560-1 632 (700-1)	1600-1 672 (700-1)	1600-2 672 (700-2)	NA

EC-3, 22 OCT 2009 to 19 NOV 2009

EC-3, 22 OCT 2009 to 19 NOV 2009