

MIDDLETON, WISCONSIN

AL-6171 (FAA)

LOC/DME I-CFQ 110.35 Chan 40 (Y)	APP CRS 101°	Rwy Idg 4000 TDZE 928 Apt Elev 928
---	------------------------	---

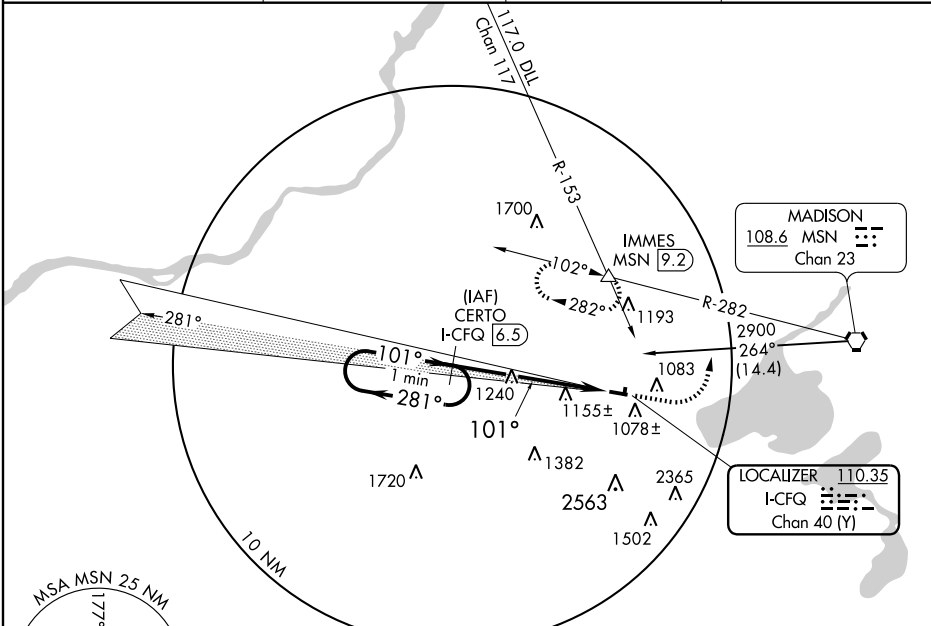
LOC/DME RWY 10

MIDDLETON MUNI - MOREY FIELD (C29)

Visibility reduction by helicopters NA. Use Dane County Rgnl-Truax Field altimeter setting, when not received use Baraboo Wisconsin Dells altimeter setting and increase all MDA 60 feet, and increase S-10 Cat. C visibility ¼ mile.

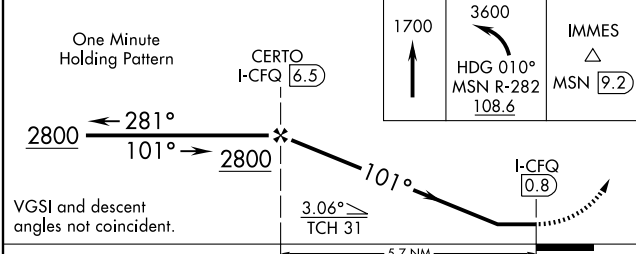
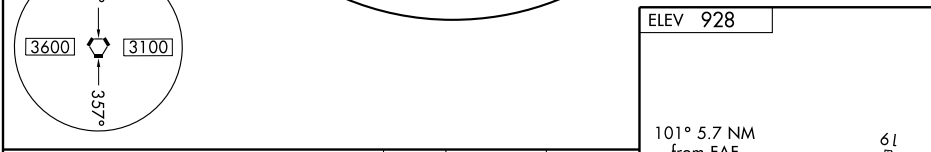
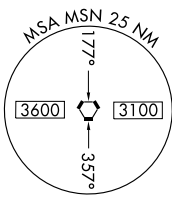
MISSED APPROACH: Climb to 1700 then climbing left turn to 3600 via heading 010° and MSN VORTAC R-282 to IMMES Int/MSN 9.2 DME and hold, continue climb-in-hold to 3600.

DANE COUNTY RGNL ATIS 124.65 278.3	MADISON APP CON★ 135.45 343.7	GCO 121.725	UNICOM 123.0 (CTAF) 1
--	---	-----------------------	--

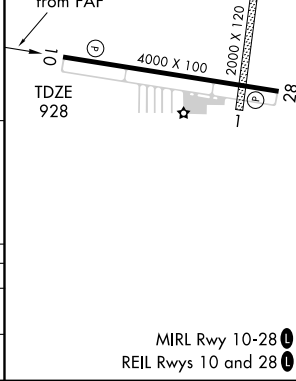


EC-3, 22 OCT 2009 to 19 NOV 2009

EC-3, 22 OCT 2009 to 19 NOV 2009



CATEGORY	A	B	C	D
S-10	1580-1	652 (700-1)	1580-1¼ 652 (700-1¼)	NA
CIRCLING	1580-1 652 (700-1)	1600-1 672 (700-1)	1600-2 672 (700-2)	NA



MIDDLETON, WISCONSIN
Amdt 1 09127

43°07'N - 89°32'W

MIDDLETON MUNI - MOREY FIELD (C29)

LOC/DME RWY 10