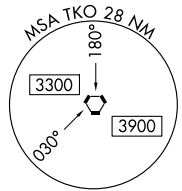
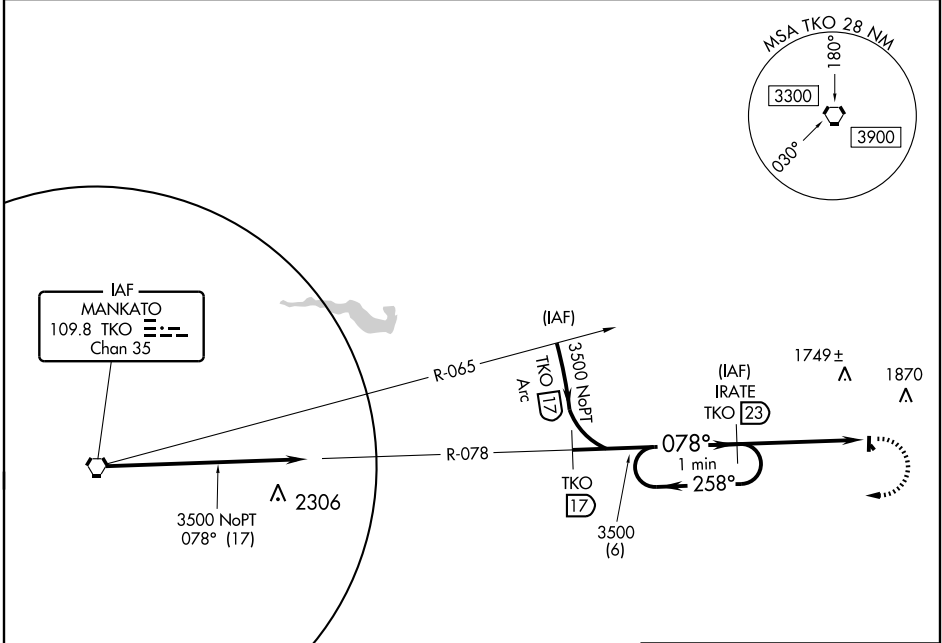


VOR/DME-A  
BELLEVILLE MUNI (RPB)

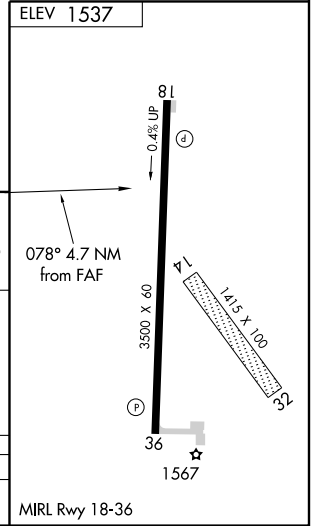
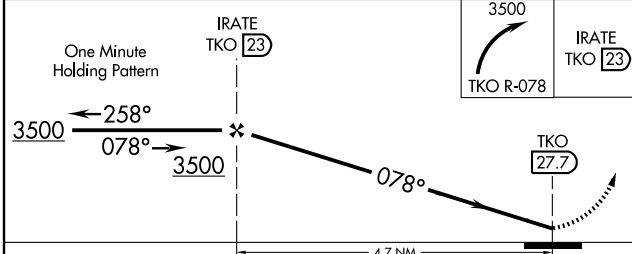
VORTAC TKO <b>109.8</b> Chan <b>35</b>	APP CRS <b>078°</b>	Rwy Idg TDZE Apt Elev <b>N/A</b> <b>N/A</b> <b>1537</b>
--	------------------------	--

<p><b>▲</b> NA Use Concordia altimeter setting.</p>	<p>MISSED APPROACH: Climbing right turn to 3500 via TKO R-078 to IRATE and hold.</p>
<p>WICHITA RADIO <b>122.1R</b></p>	<p>UNICOM <b>122.8</b> (CTAF)</p>



NC-2, 22 OCT 2009 to 19 NOV 2009

NC-2, 22 OCT 2009 to 19 NOV 2009



CATEGORY	A	B	C	D
CIRCLING	2060-1 523 (600-1)	2060-1¼ 523 (600-1¼)	2060-1½ 523 (600-1½)	NA