

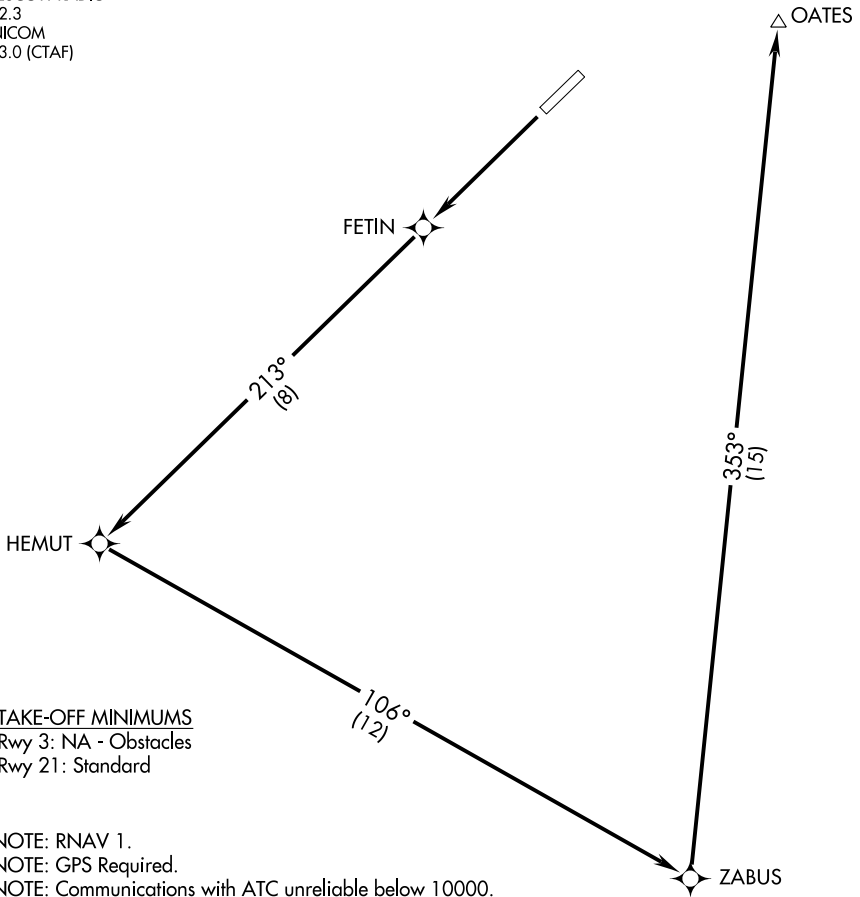
(OATES1.OATES) 08101

OATES ONE DEPARTURE (RNAV) (OBSTACLE)

SL-6169 (FAA)

SEDONA (SEZ)
SEDONA, ARIZONA

ALBUQUERQUE CENTER
124.5 306.2
PRESCOTT RADIO
122.3
UNICOM
123.0 (CTAF)



TAKE-OFF MINIMUMS

Rwy 3: NA - Obstacles
Rwy 21: Standard

NOTE: RNAV 1.
NOTE: GPS Required.
NOTE: Communications with ATC unreliable below 10000.

TAKE-OFF OBSTACLE NOTES:

Rwy 21: Trees beginning 1642' from DER, 240' right of centerline, up to 100' AGL/4786' MSL.
Bush 147' from DER, 202' left of centerline, 5' AGL/4740' MSL.

NOTE: Chart not to scale



DEPARTURE ROUTE DESCRIPTION

TAKE-OFF RUNWAY 21: Climb direct FETIN then via 213° track/8 NM to HEMUT, then left turn via 106° track/12 NM to ZABUS, then left turn via 353° track/15 NM to OATES. Maintain 10500 or assigned altitude.

OATES ONE DEPARTURE (RNAV) (OBSTACLE)

(OATES1.OATES) 08101

SEDONA, ARIZONA
SEDONA (SEZ)

SW-4, 22 OCT 2009 to 19 NOV 2009

SW-4, 22 OCT 2009 to 19 NOV 2009