

SEDONA, ARIZONA

AL-6169 (FAA)

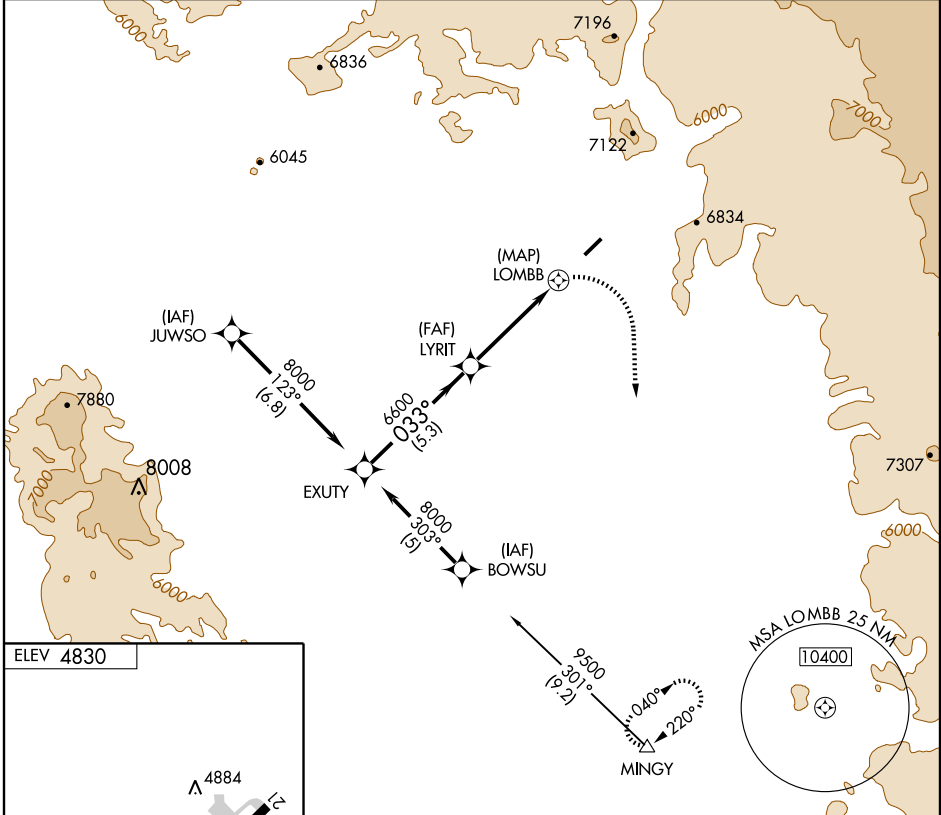
GPS RWY 3 SEDONA (SEZ)

APP CRS 033°	Rwy Idg 5132
	TDZE 4792
	Apt Elev 4830

⚠ When local altimeter not received, procedure not authorized.
⚠ NA Cat D circling not authorized northwest of Rwy 3-21.

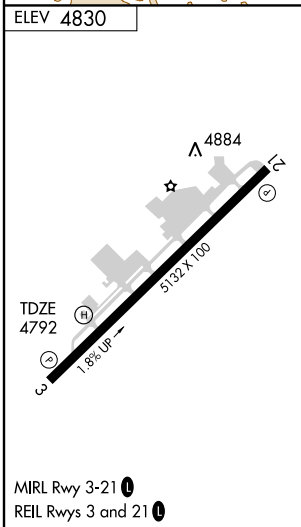
MISSED APPROACH: Climbing right turn to 12000 direct MINGY WP and hold.

AWOS-2 118.525	ALBUQUERQUE CENTER 124.5 306.2	PRESCOTT RADIO 122.3	UNICOM 123.0 (CTAF)
--------------------------	--	--------------------------------	-------------------------------



SW-4, 22 OCT 2009 to 19 NOV 2009

SW-4, 22 OCT 2009 to 19 NOV 2009



EXUTY	VGSi and descent angles not coincident.		12000	MINGY
8000	LYRIT	LOMBB		
Procedure Turn NA	033°	3.00°		
	6600	TCH 50		
	5.3 NM	4.4 NM	1.3 NM	
CATEGORY	A	B	C	D
S-3	6140-1½ 1348 (1400-1½)	6240-1½ 1448 (1500-1½)	6560-3	1768 (1800-3)
CIRCLING	6140-1½ 1310 (1400-1½)	6240-1½ 1410 (1500-1½)	6560-3	1730 (1800-3)

SEDONA, ARIZONA
Orig-A 09071

34°51'N-111°47'W

SEDONA (SEZ) GPS RWY 3