

REIDSVILLE, GEORGIA

AL-6168 (FAA)

RNAV (GPS) RWY 11

REIDSVILLE/SWINTON SMITH FIELD AT REIDSVILLE MUNI (R.V.J)

APP CRS 111°	Rwy Idg 3802
	TDZE 191
	Apt Elev 195

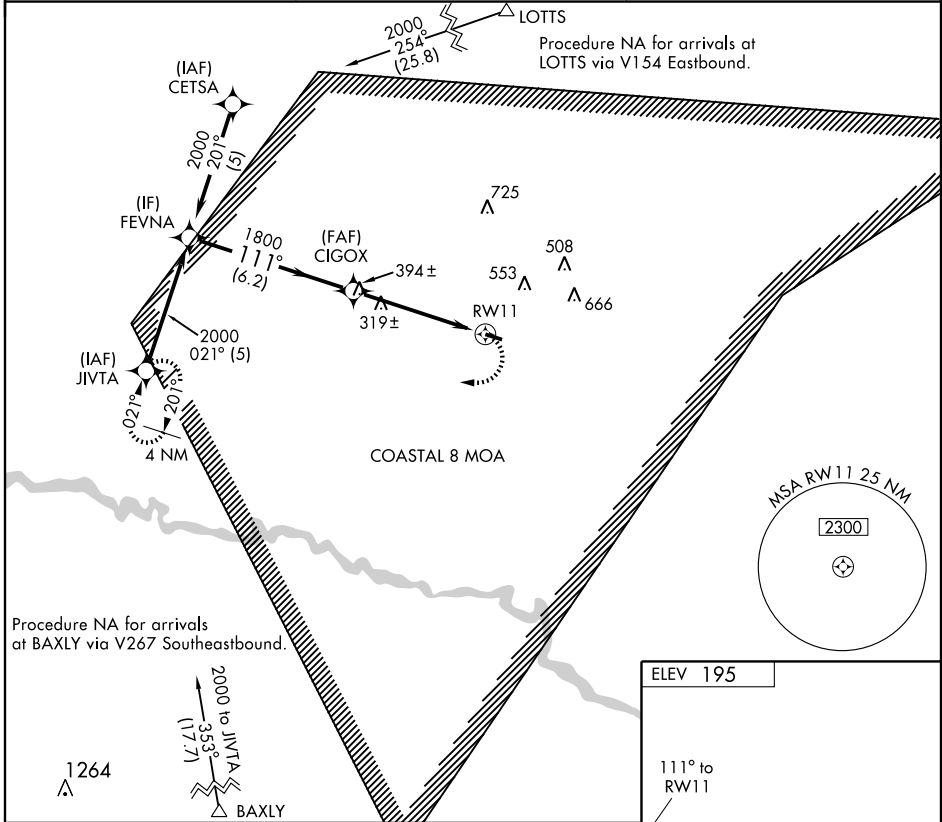
NA DME/DME RNP-0.3 NA. Use Vidalia altimeter setting; when not received, use Alma altimeter setting and increase all MDAs 40 feet. Visibility reduction by helicopters NA.

MISSED APPROACH : Climbing right turn to 2000 direct JIVTA and hold.

VIDALIA AWOS-3
119.925

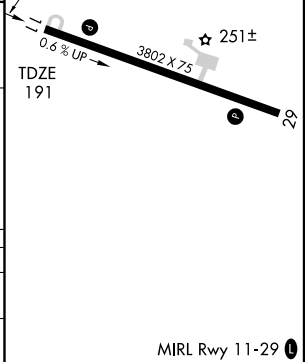
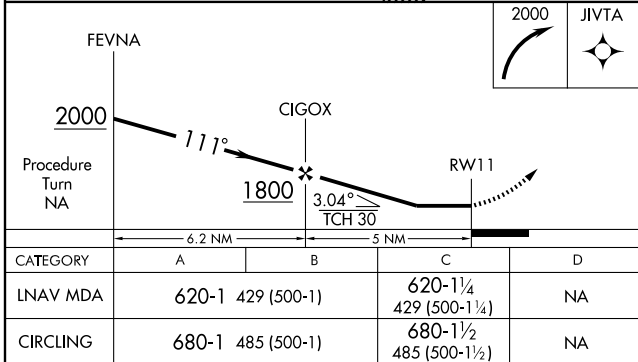
JACKSONVILLE CENTER
132.3 290.4

CTAF
122.9 0



SE-4, 22 OCT 2009 to 19 NOV 2009

SE-4, 22 OCT 2009 to 19 NOV 2009



REIDSVILLE, GEORGIA
Orig 08157

REIDSVILLE/ SWINTON SMITH FIELD AT REIDSVILLE MUNI (R.V.J)
32°04'N-82°09'W

RNAV (GPS) RWY 11

MIRL Rwy 11-29 0