

NDB RWY 11

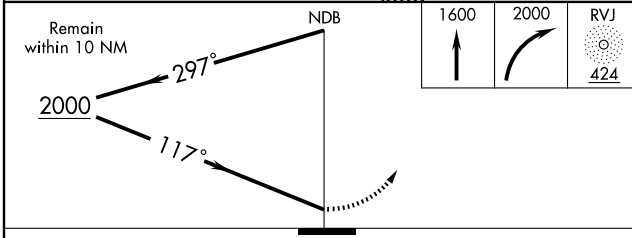
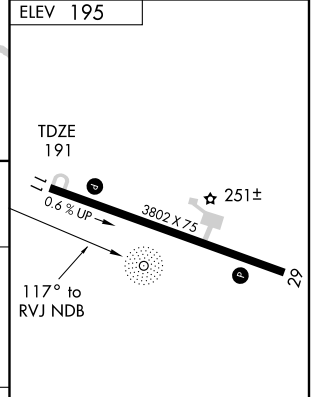
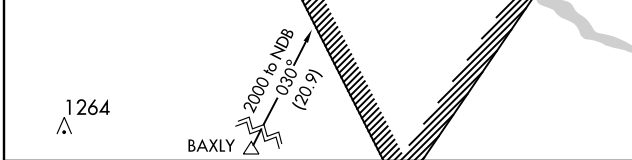
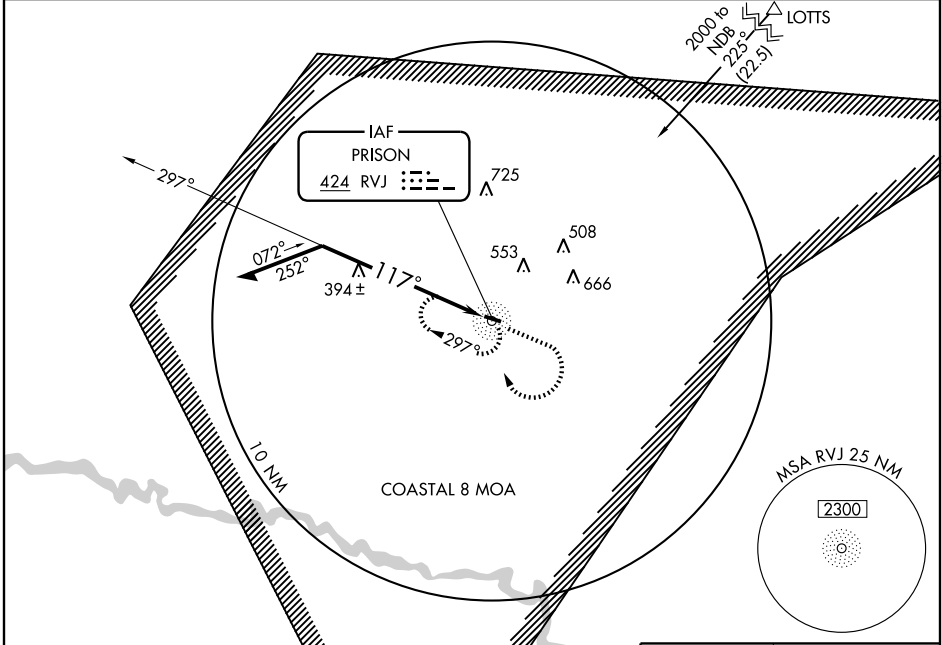
REIDSVILLE/ SWINTON SMITH FIELD AT REIDSVILLE MUNI (R.VJ)

NDB RVJ 424	APP CRS 117°	Rwy Idg 3802
		TDZE 191
		Apt Elev 195

▼ Use Vidalia altimeter setting; when not received, use Alma altimeter setting and increase all MDAs 40 feet. Visibility reduction by helicopters NA.

MISSED APPROACH: Climb to 1600 then climbing right turn to 2000 direct RVJ NDB and hold.

VIDALIA AWOS-3 119.925	JACKSONVILLE CENTER 132.3 290.4	CTAF 122.9 0
----------------------------------	---	------------------------



CATEGORY	A	B	C	D
S-11	800-1 609 (700-1)		800-1 $\frac{3}{4}$ 609 (700-1 $\frac{3}{4}$)	NA
CIRCLING	800-1 605 (700-1)		800-1 $\frac{3}{4}$ 605 (700-1 $\frac{3}{4}$)	NA

MIRL Rwy 11-29 0					
Knots	60	90	120	150	180
Min:Sec					

SE-4, 22 OCT 2009 to 19 NOV 2009

SE-4, 22 OCT 2009 to 19 NOV 2009

NDB RWY 11