

PERRY, FLORIDA

AL-6165 (FAA)

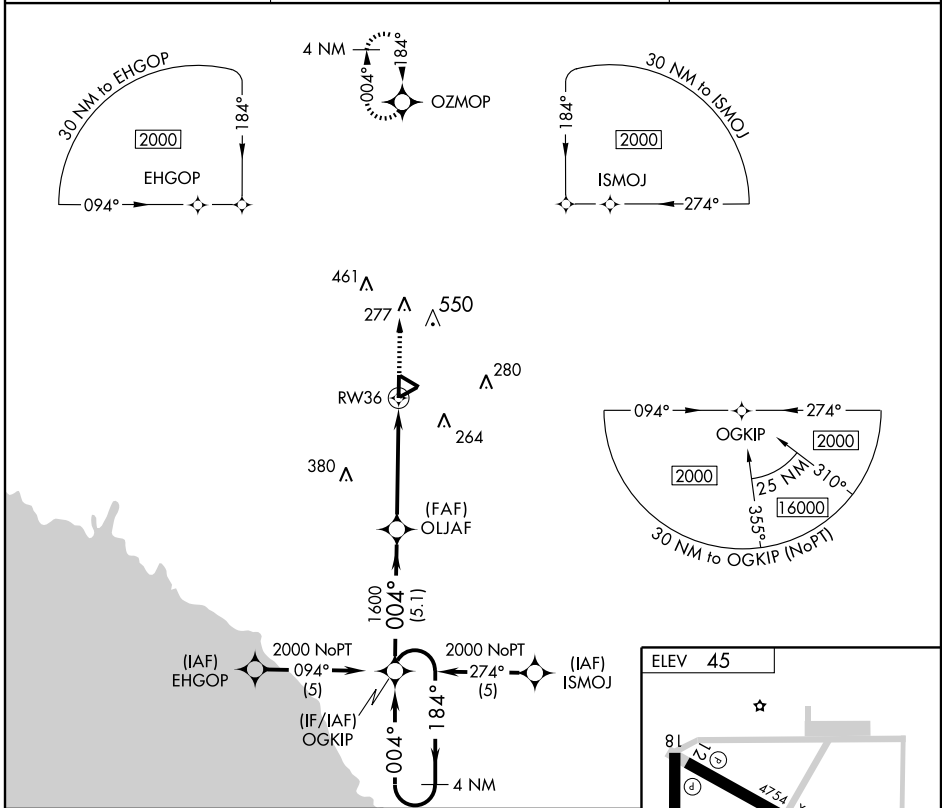
RNAV (GPS) RWY 36

PERRY-FOLEY (40J)

APP CRS	Rwy Idg	4986
004°	TDZE	43
	Apt Elev	45

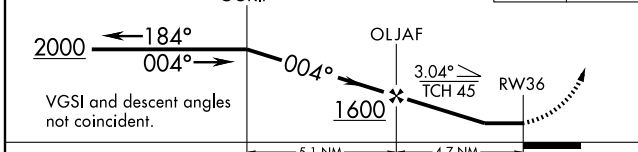
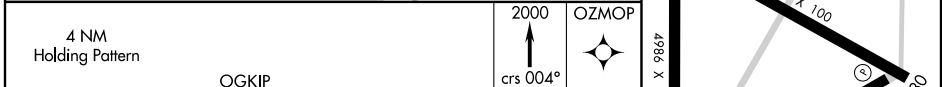
NA DME/DME RNP-0.3 NA.	MISSED APPROACH: Climb to 2000 via 004° course to OZMOP WP and hold.
---------------------------	--

AWOS-1 118.375	JACKSONVILLE CENTER 127.8 352.0	UNICOM 122.8 (CTAF) ①
--------------------------	---	---------------------------------

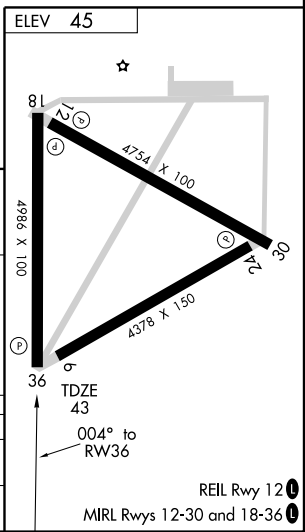


SE-3, 22 OCT 2009 to 19 NOV 2009

SE-3, 22 OCT 2009 to 19 NOV 2009



CATEGORY	A	B	C	D
RNAV MDA	460-1	417 (500-1)	460-1¼	417 (500-1¼)
CIRCLING	620-1	575 (600-1)	620-1½ 575 (600-1½)	860-2¾ 815 (900-2¾)



PERRY, FLORIDA
 Orig-B 09183

30° 04' N - 83° 35' W

RNAV (GPS) RWY 36