

PERRY, FLORIDA

AL-6165 (FAA)

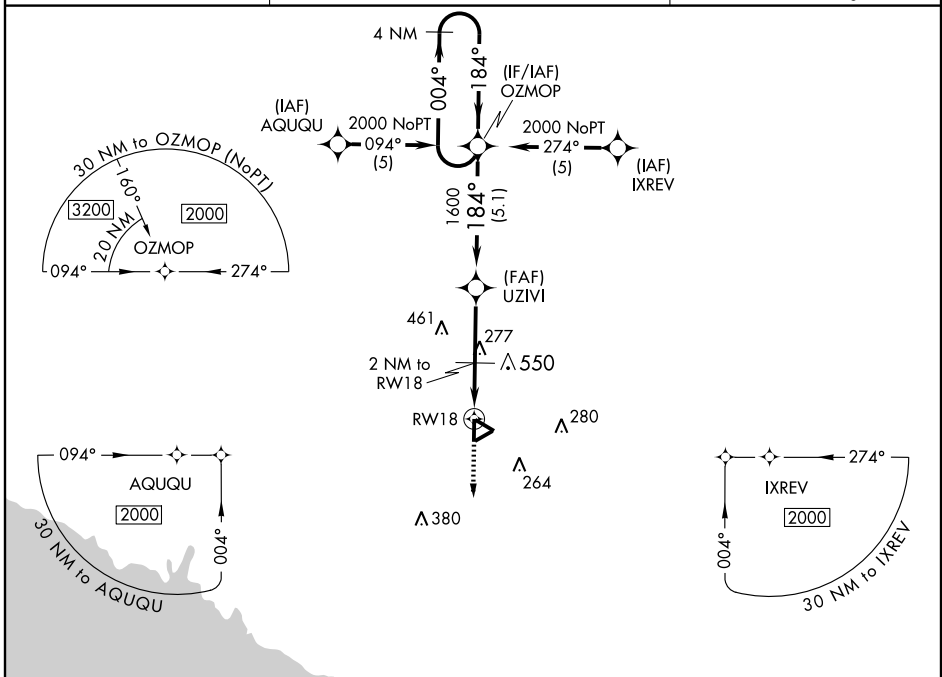
RNAV (GPS) RWY 18

PERRY-FOLEY (40J)

APP CRS	Rwy Idg	4986
184°	TDZE	43
	Apt Elev	45

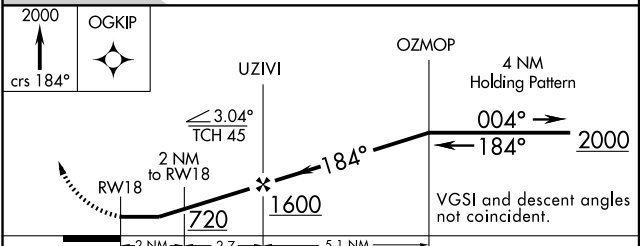
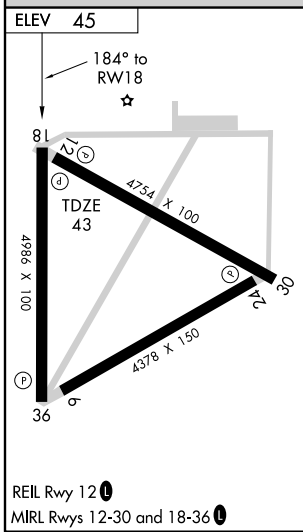
V GPS or RNP-0.3 Required. MISSED APPROACH: Climb to 2000 via 184° course to OGKIP WP and hold.

AWOS-1 118.375	JACKSONVILLE CENTER 127.8 352.0	UNICOM 122.8 (CTAF)
--------------------------	---	-------------------------------



SE-3, 22 OCT 2009 to 19 NOV 2009

SE-3, 22 OCT 2009 to 19 NOV 2009



CATEGORY	A	B	C	D
LNAV MDA	660-1	617 (700-1)	660-1¾ 617 (700-1¾)	660-2 617 (700-2)
CIRCLING	660-1	615 (700-1)	660-1¾ 615 (700-1¾)	860-2 845 (900-2¾)

PERRY, FLORIDA
Orig 09183

30° 04' N - 83° 35' W

RNAV (GPS) RWY 18

PERRY-FOLEY (40J)