

ATLANTA, TEXAS

AL-6164 (FAA)

RNAV (GPS) RWY 5

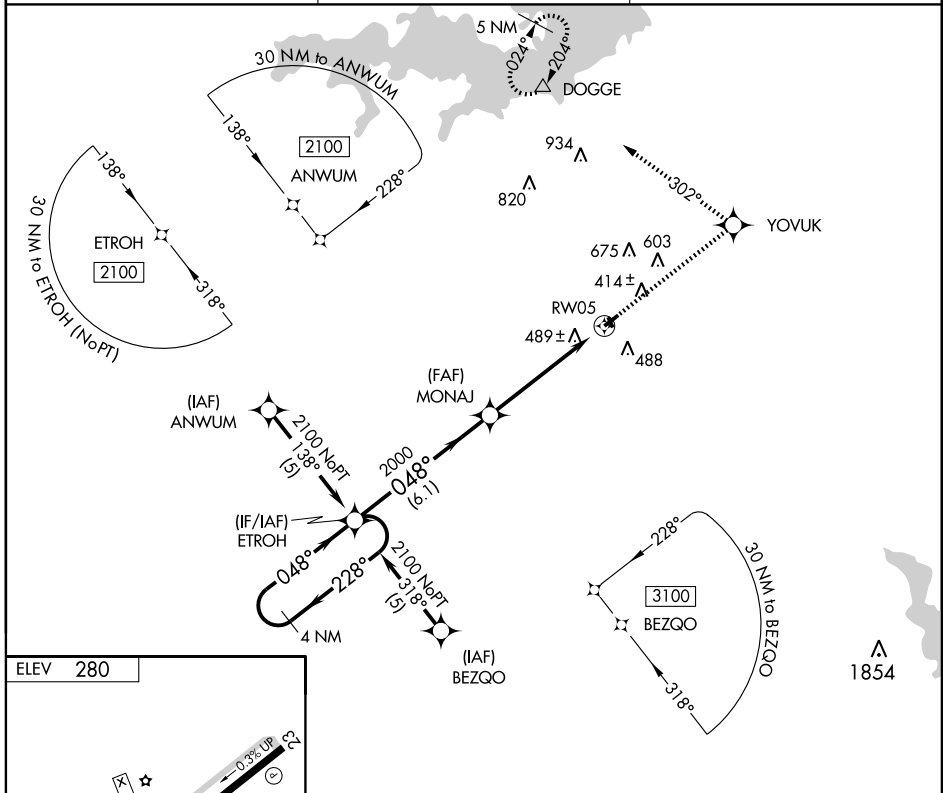
ATLANTA/HALL-MILLER MUNI (ATA)

APP CRS 048°	Rwy Idg 3800
	TDZE 280
	Apt Elev 280

▽ DME/DME RNP-0.3 NA. Visibility reduction by helicopters NA.
△ NA Use Texarkana altimeter setting, when not received use Mount Pleasant altimeter setting and increase all MDA 40 feet.

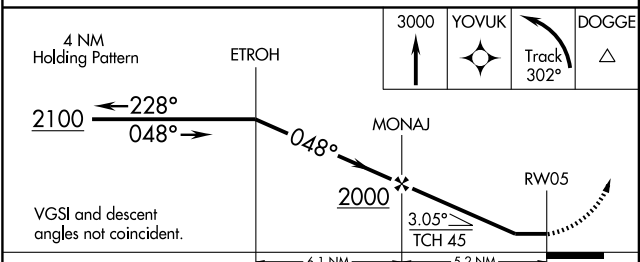
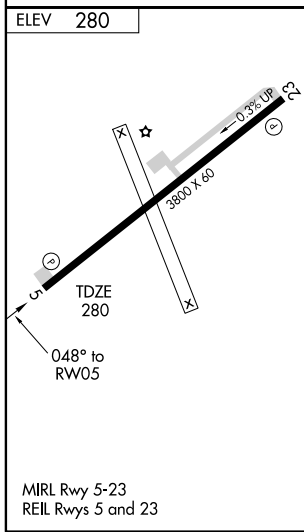
MISSED APPROACH: Climb to 3000 direct YOVUK and left turn via 302° track to DOGGE and hold.

TEXARKANA ASOS 120.2	FORT WORTH CENTER 123.925 269.475	CTAF 122.9
--------------------------------	---	----------------------



SC-2, 22 OCT 2009 to 19 NOV 2009

SC-2, 22 OCT 2009 to 19 NOV 2009



CATEGORY	A	B	C	D
LNAV MDA	860-1	580 (600-1)	NA	
CIRCLING	920-1	640 (700-1)	NA	

ATLANTA, TEXAS
Amdt 1 09071

33°06'N-94°12'W

ATLANTA/HALL-MILLER MUNI (ATA)
RNAV (GPS) RWY 5