

VORTAC PIA <b>115.2</b> Chan <b>99</b>	APP CRS <b>173°</b>	Rwy ldg TDZE Apt Elev <b>N/A</b> <b>N/A</b> <b>501</b>
--	------------------------	---

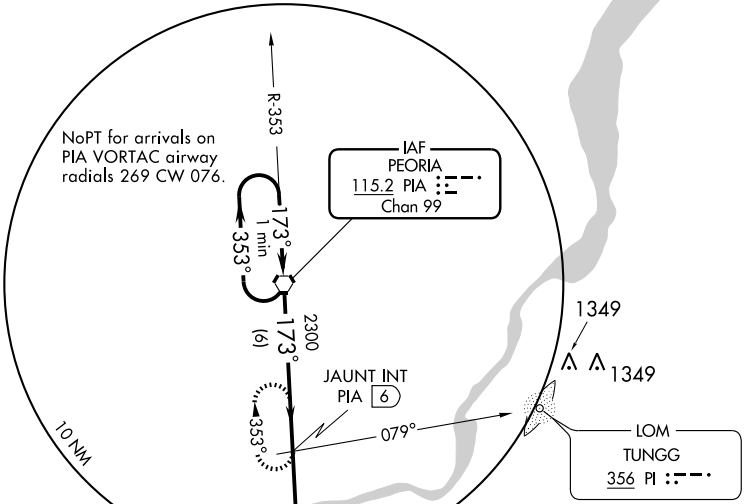
**VOR or GPS-A**  
MANITO MITCHELL (C45)

**▼** Use Peoria altimeter setting. DME or ADF REQUIRED.  
**▲NA** CAUTION: 550' pole lines 100 feet from Rwy 22 threshold.  
 Procedure not authorized at night except by prior arrangement for runway lights.

MISSED APPROACH: Climbing right turn to 2300 via PIA R-173 to JAUNT Int 6 DME and hold.

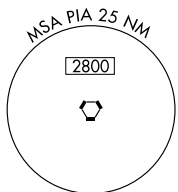
PEORIA APP CON  
**124.675 269.2**

UNICOM  
**122.8** (CTAF)

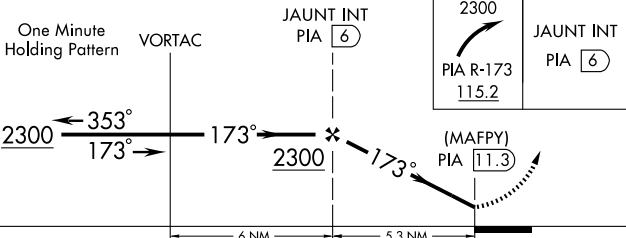
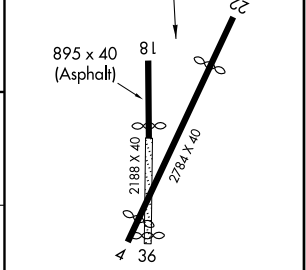


EC-3, 22 OCT 2009 to 19 NOV 2009

EC-3, 22 OCT 2009 to 19 NOV 2009



ELEV 501
Rwy 4 ldg 2609'
Rwy 22 ldg 2336'
Rwy 18 ldg 1488'
Rwy 36 ldg 2108'



Rwy 4-22 Rwy lights only between displaced thresholds, 2281'.

CATEGORY	A	B	C	D	FAF to MAP 5.3 NM					
CIRCLING	1040-1	530 (600-1)	1040-1½ 530 (600-1½)	NA	Knots	60	90	120	150	180
					Min:Sec	5:18	3:32	2:39	2:07	1:46