

MT. CARMEL, ILLINOIS

AL-6159 (FAA)

RNAV (GPS) RWY 31

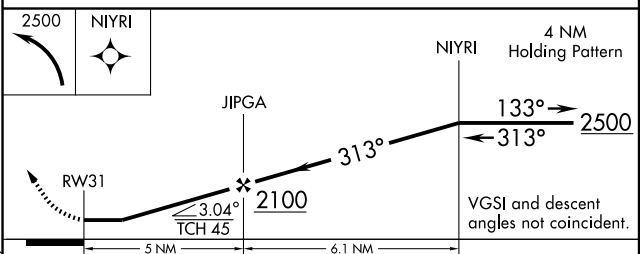
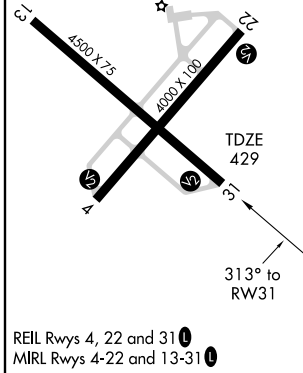
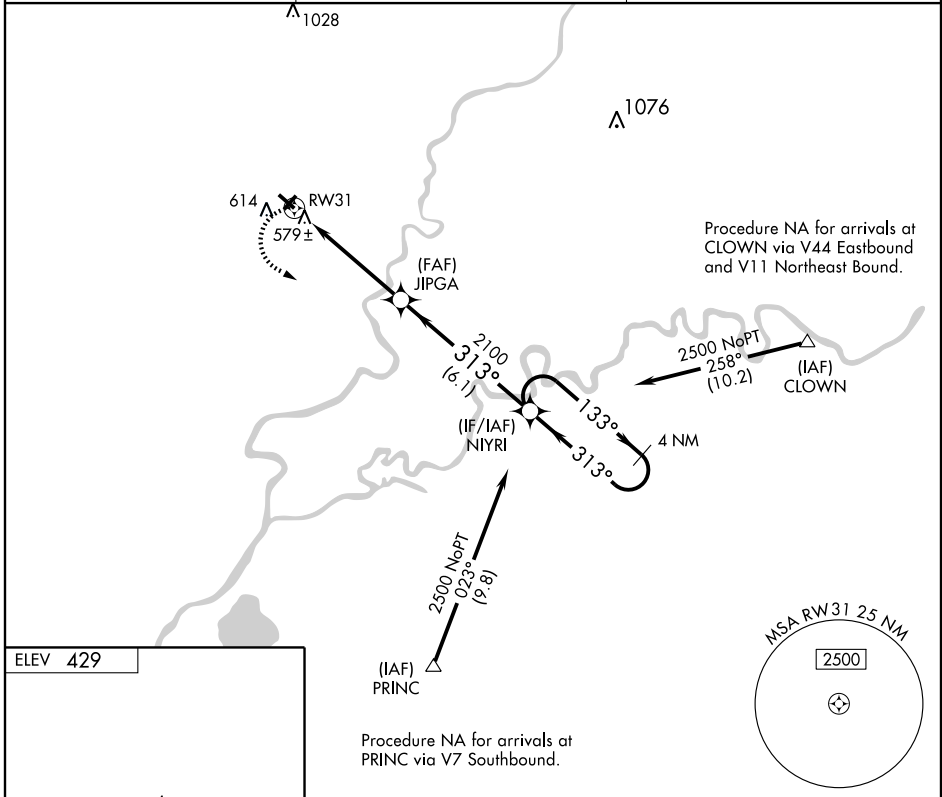
MT. CARMEL MUNI (AJG)

APP CRS 313°	Rwy Idg 4500
	TDZE 429
	Apt Elev 429

⚠ DME/DME RNP-0.3 NA. Visibility reduction by helicopters NA. When local altimeter setting not received, use Lawrenceville altimeter setting and increase all MDA 40 feet and increase LNAV Cat. D visibility ¼ mile.

⚠ NA MISSED APPROACH: Climbing left to turn 2500 direct NIYRI and hold.

AWOS-3 134.9	EVANSVILLE APP CON★ 125.6 267.9	UNICOM 122.7 (CTAF) 0
------------------------	---	---------------------------------



CATEGORY	A	B	C	D
LNAV MDA	840-1	411 (500-1)	840-1¼	411 (500-1¼)
CIRCLING	980-1	551 (600-1)	980-1½	980-2 551 (600-1½)

MT. CARMEL, ILLINOIS
Orig 09015

38° 36' N - 87° 44' W

MT. CARMEL MUNI (AJG)

RNAV (GPS) RWY 31

EC-3, 22 OCT 2009 to 19 NOV 2009

EC-3, 22 OCT 2009 to 19 NOV 2009