

# NDB or GPS RWY 4

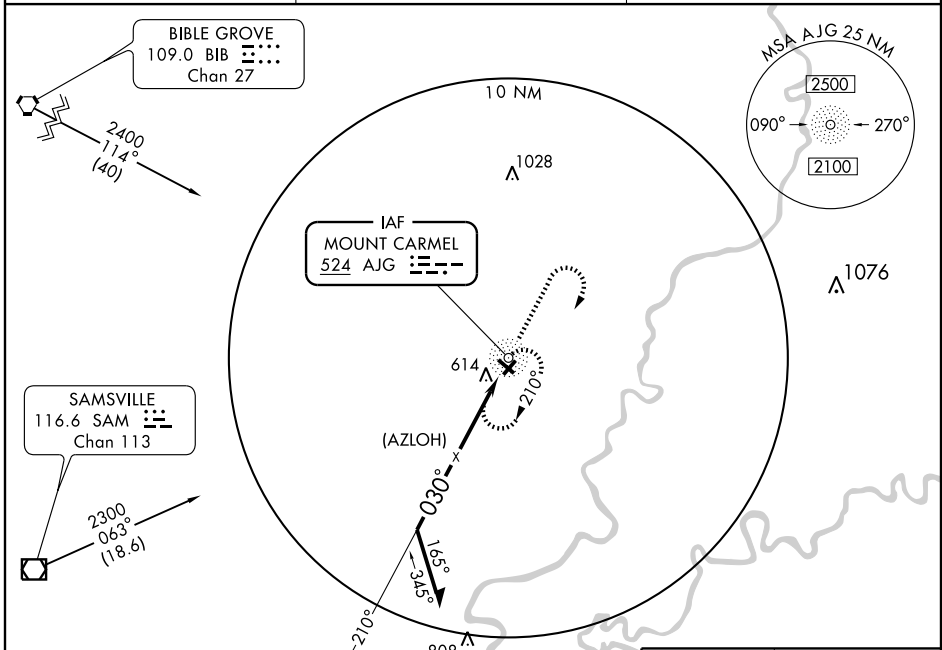
MT. CARMEL MUNI (AJG)

NDB AJG <b>524</b>	APP CRS <b>030°</b>	Rwy Idg <b>4000</b>
		TDZE <b>428</b>
		Apt Elev <b>429</b>

**▽** Obtain local altimeter setting on CTAF; when not received use Lawrenceville altimeter setting.

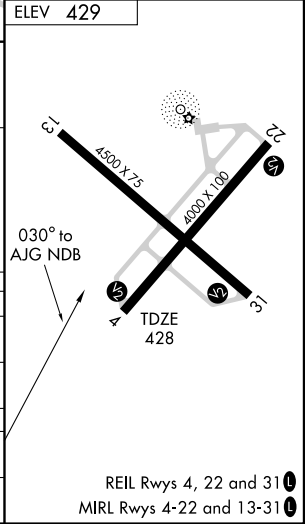
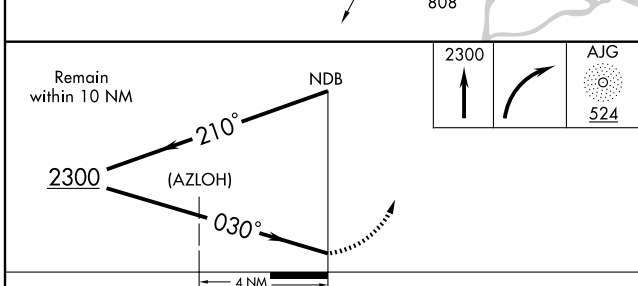
**▲ NA** MISSED APPROACH: Climb to 2300, then right turn direct AJG NDB and hold.

AWOS-3 <b>134.9</b>	EVANSVILLE APP CON★ <b>125.6 267.9</b>	UNICOM <b>122.7 (CTAF) 0</b>
------------------------	---	---------------------------------



EC-3, 22 OCT 2009 to 19 NOV 2009

EC-3, 22 OCT 2009 to 19 NOV 2009



CATEGORY	A	B	C	D
S-4	1080-1	652 (700-1)	1080-1¾ 652 (700-1¾)	NA
CIRCLING	1080-1	651 (700-1)	1080-1¾ 651 (700-1¾)	NA
LAWRENCEVILLE ALTIMETER SETTING MINIMUMS				
S-4	1100-1	672 (700-1)	1100-2 672 (700-2)	NA
CIRCLING	1100-1	671 (700-1)	1100-2 671 (700-2)	NA