

MIDLAND, TEXAS

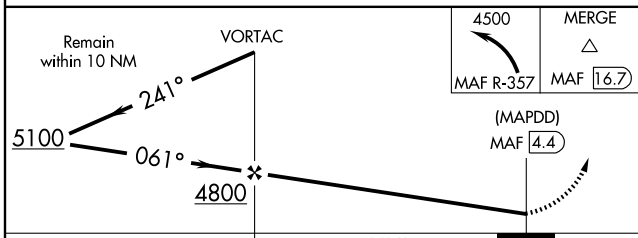
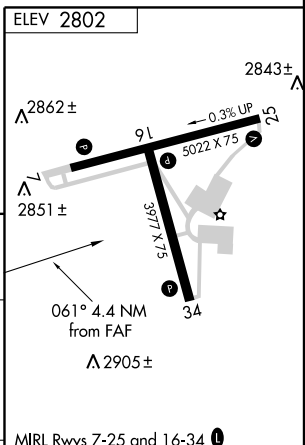
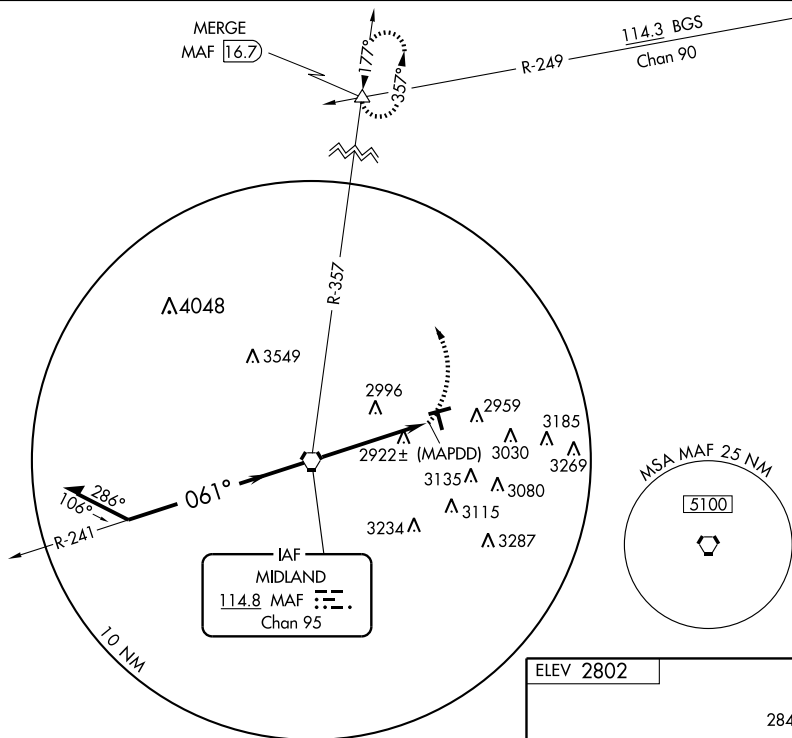
AL-6158 (FAA)

VORTAC MAF 114.8 Chan 95	APP CRS 061°	Rwy Idg TDZE Apt Elev N/A N/A 2802
----------------------------------------------	------------------------	------------------------------------------------------------------------

VOR or GPS-A

MIDLAND AIRPARK (MIDD)

<p>▼ Use Midland Intl altimeter setting.</p> <p>▲ NA</p>		<p>MISSED APPROACH: Climbing left turn to 4500 via MAF R-357 to MERGE Int and hold.</p>	
AWOS-3 118.125	MIDLAND APP CON ★ 124.6 290.4	CLNC DEL 121.8	UNICOM 122.7 (CTAF) 0



CATEGORY	A		B		C		D		FAF to MAP 4.4 NM				
	CIRCLING	3380-1	578 (600-1)	3380-1½	578 (600-1½)	3700-3	898 (900-3)	Knots	60	90	120	150	180
		4:24	2:56	2:12	1:46	1:28		Min:Sec	4:24	2:56	2:12	1:46	1:28

MIDLAND, TEXAS
Amdt 2 08101

32°02'N-102°06'W

MIDLAND AIRPARK (MIDD)

VOR or GPS-A

SC-3, 22 OCT 2009 to 19 NOV 2009

SC-3, 22 OCT 2009 to 19 NOV 2009