

YOAKUM, TEXAS

AL-6157 (FAA)

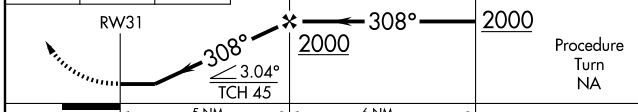
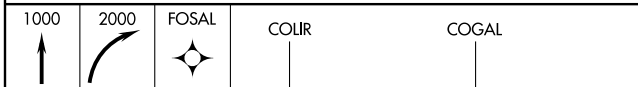
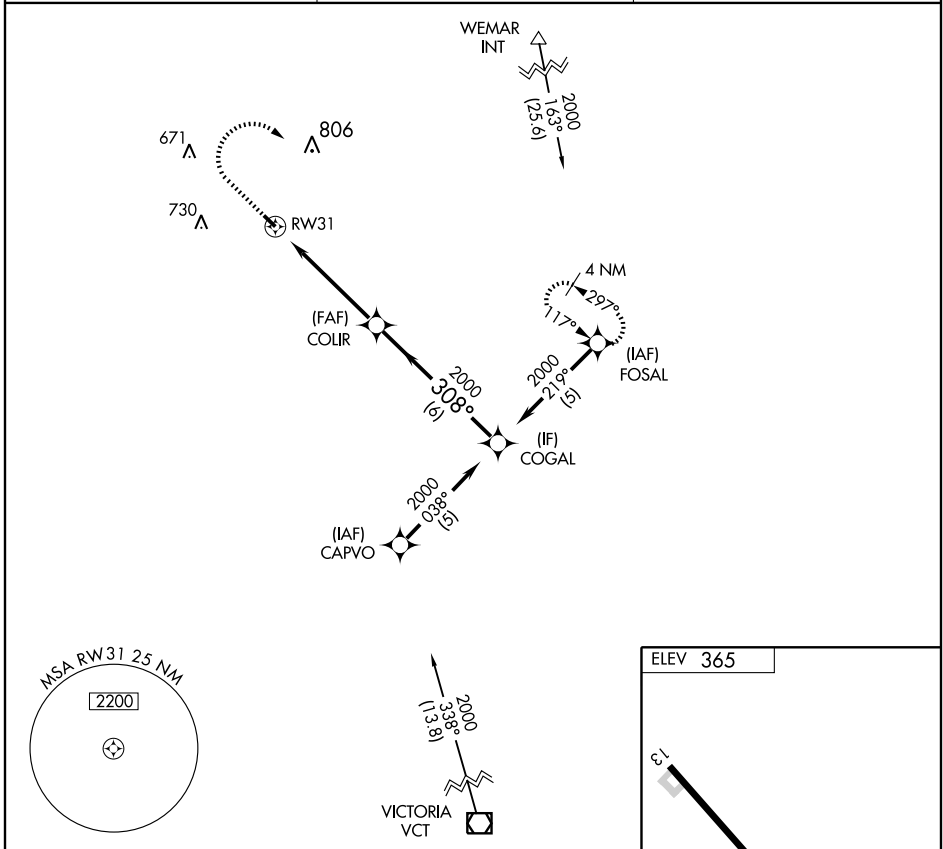
RNAV (GPS) RWY 31

YOAKUM MUNI (T85)

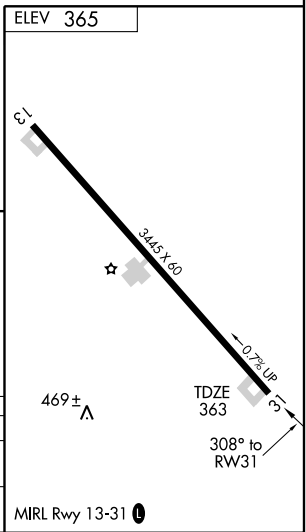
APP CRS	Rwy Idg	3445
308°	TDZE	363
	Apt Elev	365

▲ NA Use Victoria Regional altimeter setting. Procedure not authorized at night. DME/DME RNP-0.3 NA. **MISSED APPROACH:** Climb to 1000 then climbing right turn to 2000 direct FOSAL and hold.

VICTORIA REGIONAL ASOS 119.025	HOUSTON CENTER 132.8 343.7	CTAF 122.9 0
--	--------------------------------------	------------------------



CATEGORY	A	B	C	D
RNAV MDA	840-1	477 (500-1)	840-1½ 477 (500-1½)	NA
CIRCLING	920-1	555 (600-1)	920-1½ 555 (600-1½)	NA



SC-3, 22 OCT 2009 to 19 NOV 2009

SC-3, 22 OCT 2009 to 19 NOV 2009

YOAKUM, TEXAS
Orig-A 06187

29°19'N - 097°08'W

RNAV (GPS) RWY 31