

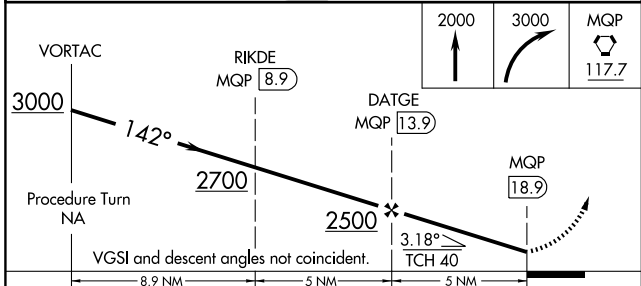
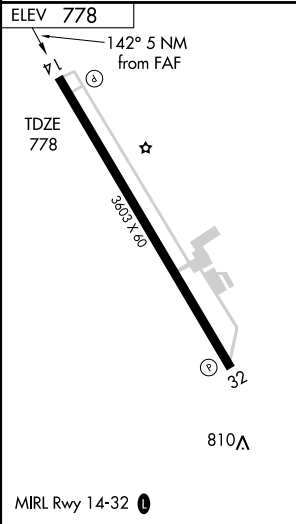
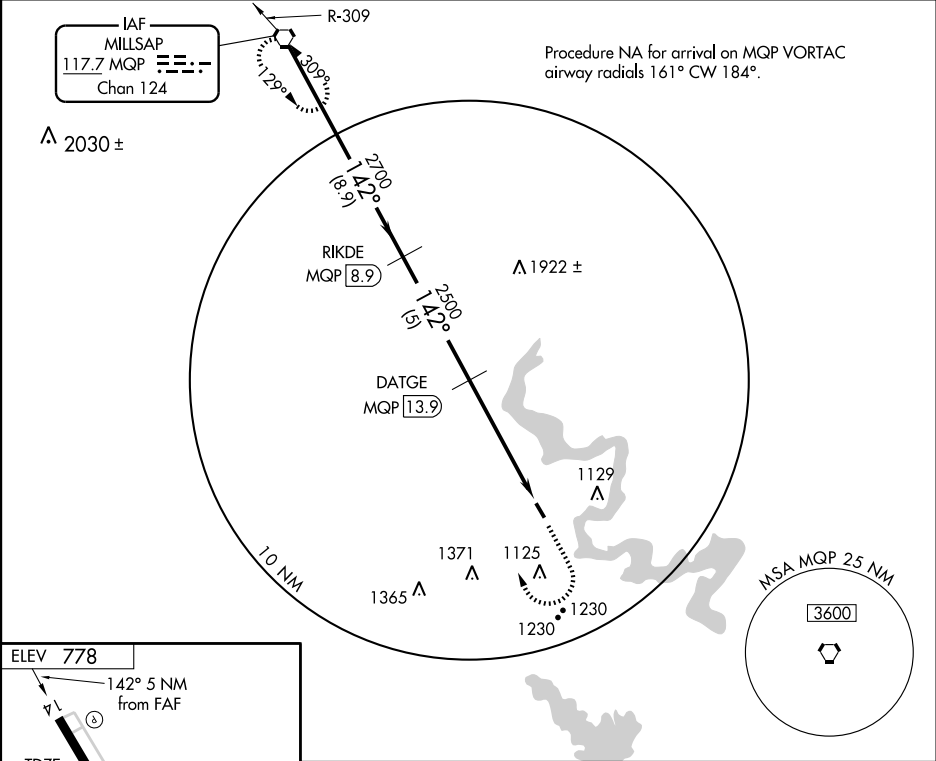
VORTAC MQP <b>117.7</b> Chan <b>124</b>	APP CRS <b>142°</b>	Rwy Idg <b>3603</b> TDZE <b>778</b> Apt Elev <b>778</b>
---	------------------------	---

# VOR/DME RWY 14

GRANBURY RGNL (G.DJ)

**▲** Use Fort Worth Meacham Intl altimeter setting. **▲** NA MISSED APPROACH: Climb to 2000, then climbing right turn to 3000 direct MQP VORTAC and hold.

AWOS-3 <b>118.925</b>	FORT WORTH CENTER <b>127.15 314.0</b>	UNICOM <b>123.0</b> (CTAF) <b>0</b>
--------------------------	--	--



CATEGORY	A	B	C	D
S-14	1400-1	622 (700-1)	1400-1 <sup>3/4</sup> 622 (700-1 <sup>3/4</sup> )	NA
CIRCLING	1420-1 642 (700-1)	1440-1 662 (700-1)	1440-1 <sup>3/4</sup> 662 (700-1 <sup>3/4</sup> )	NA

SC-2, 22 OCT 2009 to 19 NOV 2009

SC-2, 22 OCT 2009 to 19 NOV 2009