

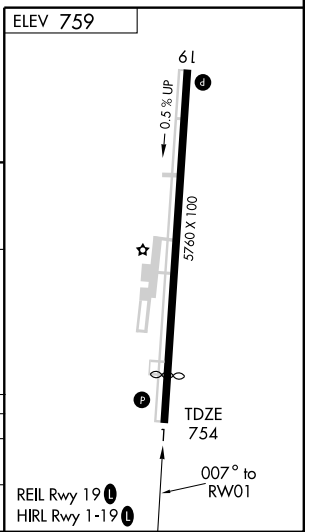
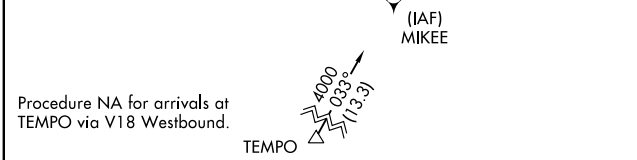
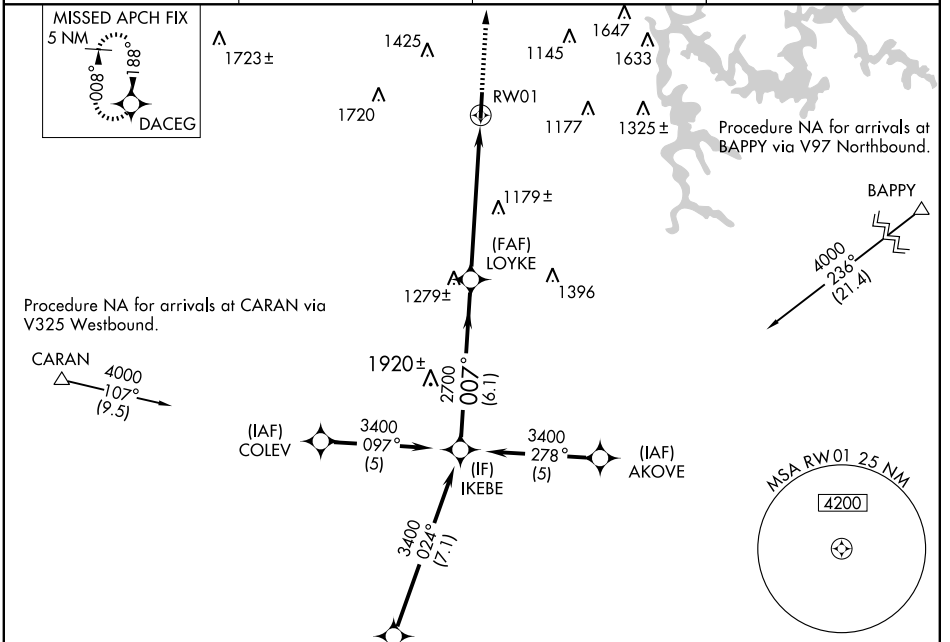
RNAV (GPS) RWY 1 CARTERSVILLE (VPC)

APP CRS	Rwy Idg	5020
007°	TDZE	754
	Apt Elev	759

▼ When VGSI inop, straight-in/circling Rwy 1 procedure NA at night. If local altimeter setting not received, use Richard B. Russell altimeter setting and increase all MDAs 80 feet. DME/DME RNP-0.3 NA. Visibility reduction by helicopters NA.

▲ MISSED APPROACH: Climb to 3000 direct DACEG and hold.

ASOS 120.525	ATLANTA APP CON 121.0 268.7	GCO 121.725	UNICOM 123.05 (CTAF) ①
------------------------	---------------------------------------	-----------------------	---



Procedure Turn KEBE NA	3400	007°	2700	3.05° TCH 40	RW01
VGSI and descent angles not coincident.					
	6.1 NM		5.9 NM		

CATEGORY	A	B	C	D
RNAV MDA	1440-1	686 (700-1)	1440-2 686 (700-2)	1440-2 1/4 686 (700-2 1/4)
CIRCLING	1440-1	681 (700-1)	1600-2 1/2 841 (900-2 1/2)	1600-2 3/4 841 (900-2 3/4)

SE-4, 22 OCT 2009 to 19 NOV 2009

SE-4, 22 OCT 2009 to 19 NOV 2009