

RNAV (GPS) RWY 15

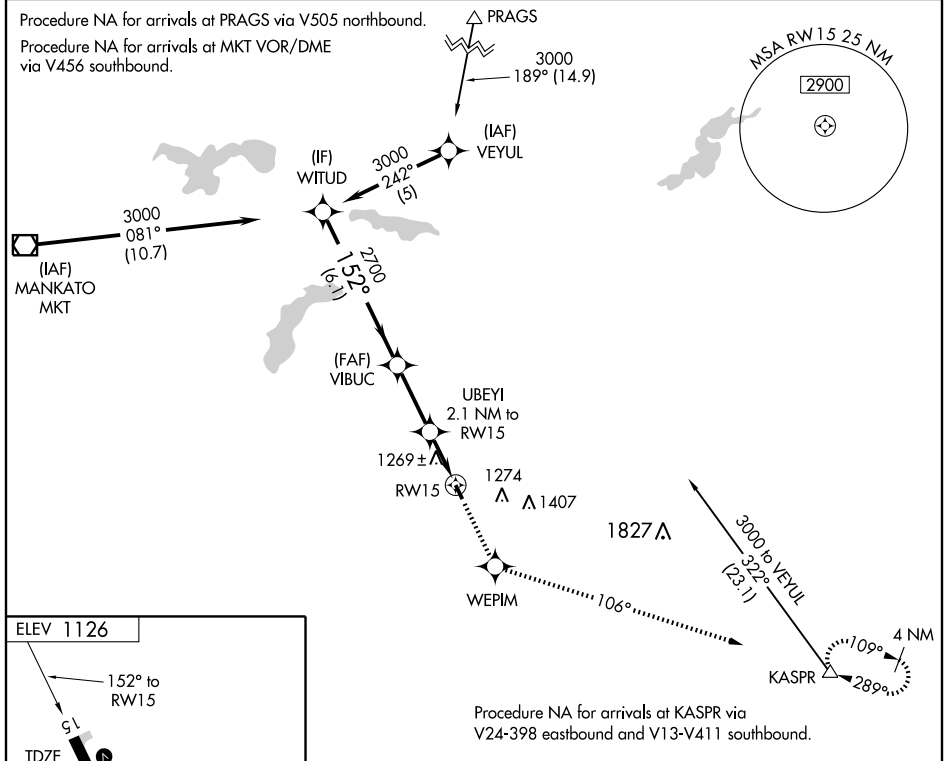
WASECA MUNI (ACQ)

| | | |
|-------------|----------|-------------|
| APP CRS | Rwy Idg | 3398 |
| 152° | TDZE | 1126 |
| | Apt Elev | 1126 |

- ▼ DME/DME RNP-0.3 NA.
- ▲ VDP NA when using Owatonna altimeter setting.
- ▲ When local altimeter setting not received, use Owatonna altimeter setting and increase all MDA 40 feet and LNAV Cat. C visibility ¼ mile.

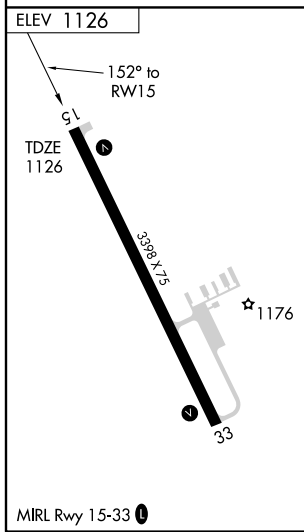
MISSED APPROACH: Climb to 3000 direct WEPIM and via 106° track to KASPR and hold.

| | | |
|----------------------|---|---------------------------------|
| AWOS-3 371 | MINNEAPOLIS CENTER 132.35 307.3 | UNICOM 122.8 (CTAF) 0 |
|----------------------|---|---------------------------------|



NC-1, 22 OCT 2009 to 19 NOV 2009

NC-1, 22 OCT 2009 to 19 NOV 2009



VGSI and descent angles not coincident.

| | | | | |
|-------------------|-----------------------|-----------------------|-------------------------|-------------|
| WITUD | 3000 | WEPIM | 106° track | KASPR |
| | | | | |
| Procedure Turn NA | 3000 | 2700 | 1840 | |
| | 6.1 NM | 2.7 NM | 0.7 NM | 1.4 NM |
| CATEGORY | A | B | C | D |
| LNAV MDA | 1520-1 | | | 394 (400-1) |
| CIRCLING | 1580-1 454 (500-1) | 1640-1 514 (600-1) | 1660-1½ 534 (600-1½) | NA |