

HOMERVILLE, GEORGIA

AL-6149 (FAA)

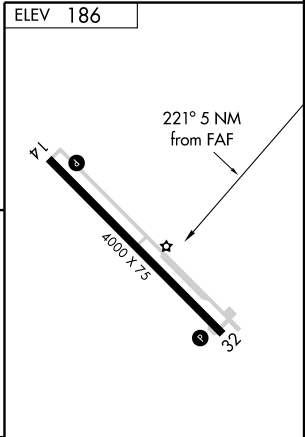
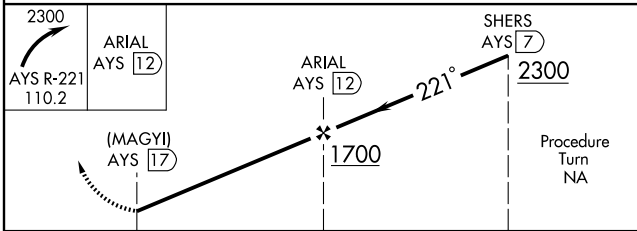
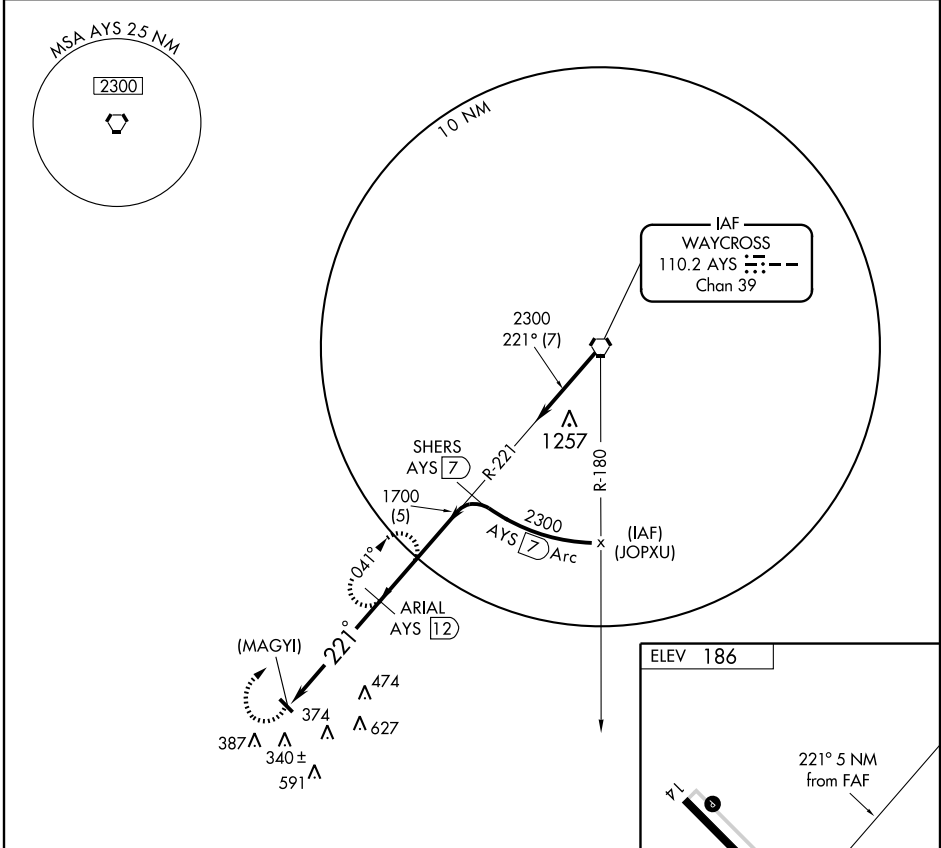
VORTAC AYS <b>110.2</b> Chan <b>39</b>	APP CRS <b>221°</b>	Rwy Idg TDZE Apt Elev <b>186</b>	<b>N/A</b> <b>N/A</b> <b>186</b>
--	------------------------	---	--

# VOR/DME or GPS-A

HOMERVILLE (HOE)

**▲** NA Use Valdosta altimeter setting. MISSED APPROACH: Climbing right turn to 2300 via AYS R-221 to ARIAL 12 DME and hold.

AWOS-3 <b>118.725</b>	VALDOSTA APP CON* <b>126.6 285.6</b>	CTAF <b>122.9</b> <b>①</b>
--------------------------	---	-------------------------------



CATEGORY	A	B	C	D
CIRCLING	800-1	614 (700-1)	820-1¾ 634 (700-1¾)	820-2 634 (700-2)

MIRL Rwy 14-32 **①**

HOMERVILLE, GEORGIA  
Amdt 3A 09015

31°03'N-82°46'W

# VOR/DME or GPS-A

HOMERVILLE (HOE)

SE-4, 22 OCT 2009 to 19 NOV 2009

SE-4, 22 OCT 2009 to 19 NOV 2009