

| | | | |
|--|------------------------|-----------------------------|---|
| WAAS CH 70407 W28A | APP CRS 286° | Rwy Idg TDZE Apt Elev | 5477 126 144 |
|--|------------------------|-----------------------------|---|

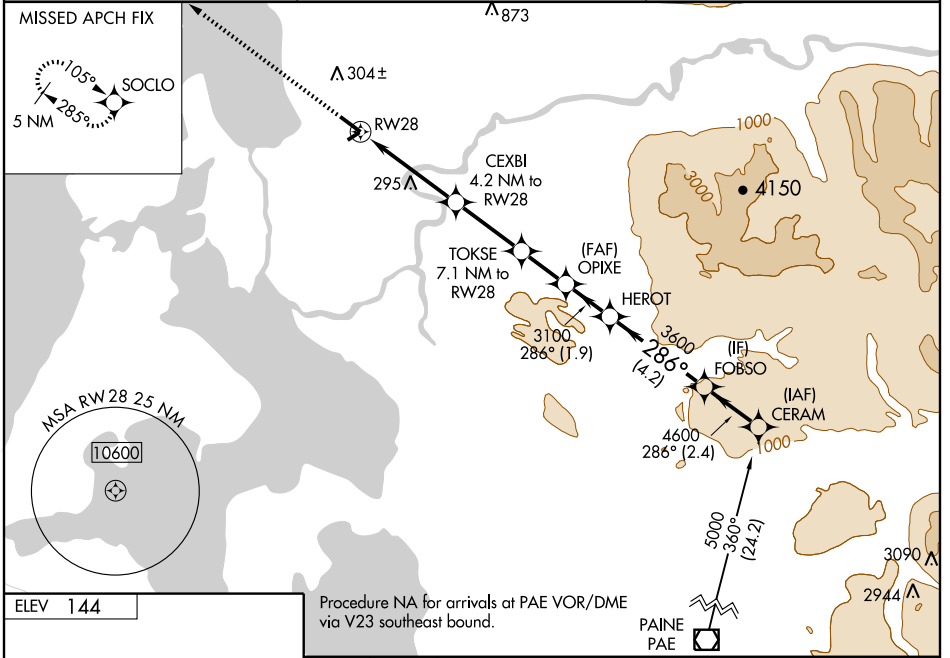
RNAV (GPS) RWY 28

BURLINGTON/MOUNT VERNON/SKAGIT RGNL (BVS)

⚠ For uncompensated Baro-VNAV systems, LNAV/VNAV NA below -15°C (5°F) or above 49°C (120°F). DME/DME RNP-0.3 NA. Visibility reduction by helicopters NA. VDP and Baro-VNAV NA when using Friday Harbor altimeter setting. When local altimeter setting not received, use Friday Harbor altimeter setting and increase all DA/MDA 80 feet, increase LPV and LNAV/VNAV all Cats, LNAV Cats C and D visibilities ½ mile.

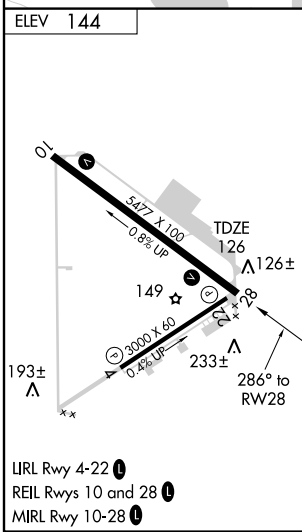
⚠ MISSED APPROACH: Climb to 4000 direct SOCLO and hold, continue climb-in-hold to 4000.

| | | |
|--------------------------|---|---------------------------------|
| AWOS-3 121.125 | WHIDBEY APP CON * 120.7 270.8 | UNICOM 123.075 (CTAF) |
|--------------------------|---|---------------------------------|

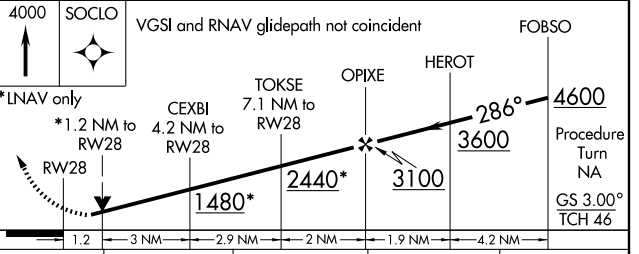


NW-1, 22 OCT 2009 to 19 NOV 2009

NW-1, 22 OCT 2009 to 19 NOV 2009



Procedure NA for arrivals at PAE VOR/DME via V23 southeast bound.



| CATEGORY | A | B | C | D |
|--------------|-------|-------------|------------------------|------------------------|
| LPV DA | | 421-1¼ | 295 (300-1¼) | |
| LNAV/VNAV DA | | 503-1½ | 377 (400-1½) | |
| LNAV MDA | 600-1 | 474 (500-1) | 600-1¼ 474 (500-1¼) | 600-1½ 474 (500-1½) |
| CIRCLING | 660-1 | 516 (600-1) | 660-1½ 516 (600-1½) | 700-2 556 (600-2) |