

RNAV (GPS) RWY 10

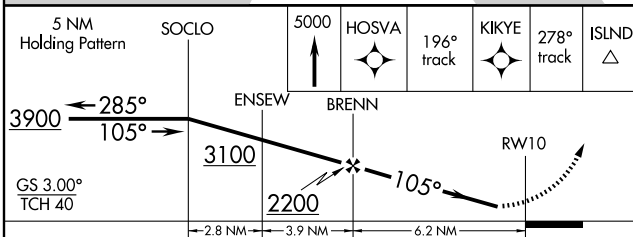
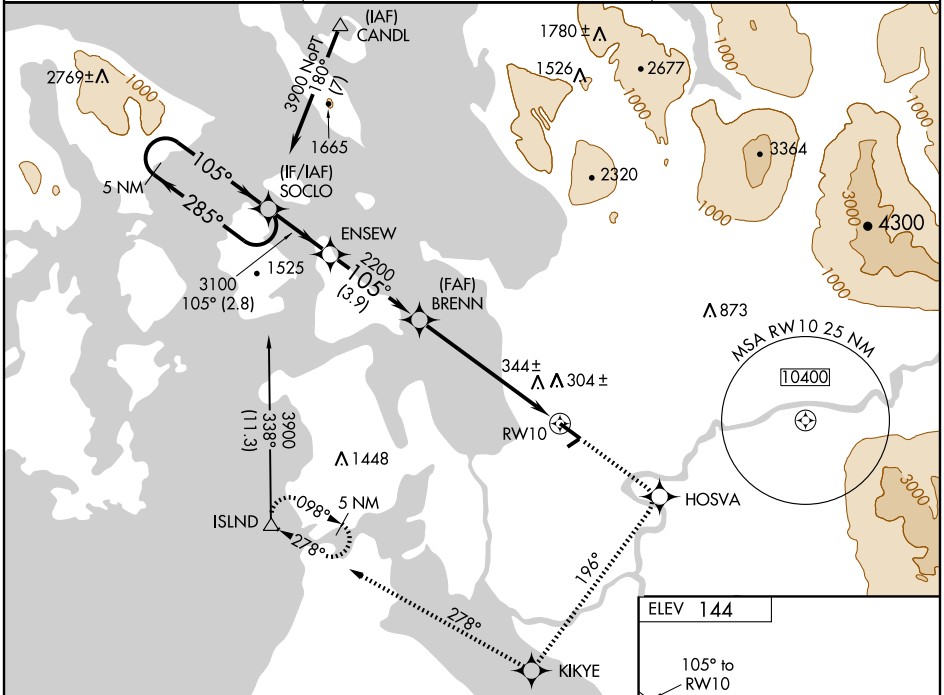
BURLINGTON/MOUNT VERNON/SKAGIT RGNL (BVS)

WAAS CH 53500 W10A	APP CRS 105°	Rwy Idg TDZE 144 Apt Elev 144	5477
--	------------------------	---	-------------

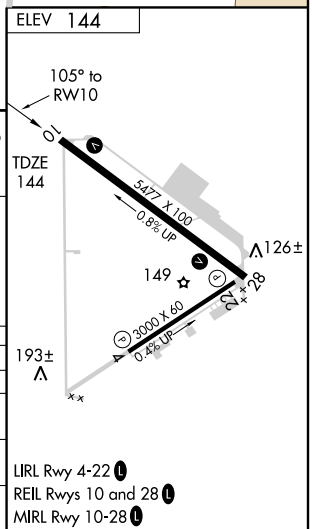
⚠ For uncompensated Baro-VNAV systems, LNAV/VNAV NA below -15°C (5°F) or above 49°C (120°F). DME/DME RNP -0.3 NA. Visibility reduction by helicopters NA. Baro-VNAV NA when using Friday Harbor altimeter setting. When local altimeter setting not received, use Friday Harbor altimeter setting and increase all DA/MDA 80 feet, increase LPV and LNAV/VNAV all Cats, LNAV Cats C and D visibilities ¼ mile.

MISSED APPROACH: Climb to 5000 direct HOSVA and via 196° track to KIKYE and via 278° track to ISLND and hold, continue climb-in-hold to 5000.

AWOS-3 121.125	WHIDBEY APP CON * 120.7 270.8	UNICOM 123.075 (CTAF)
--------------------------	---	---------------------------------



CATEGORY	A	B	C	D
LPV DA		497-1¼	353 (400-1¼)	
LNAV/VNAV DA		640-1¾	496 (500-1¾)	
LNAV MDA	620-1	476 (500-1)	620-1½ 476 (500-1½)	620-1½ 476 (500-1½)
CIRCLING	660-1	516 (600-1)	660-1½ 516 (600-1½)	700-2 556 (600-2)



RNAV (GPS) RWY 10

NW-1, 22 OCT 2009 to 19 NOV 2009

NW-1, 22 OCT 2009 to 19 NOV 2009