

ALGONA, IOWA

AL-6144 (FAA)

NDB or GPS RWY 12

ALGONA MUNI (AXA)

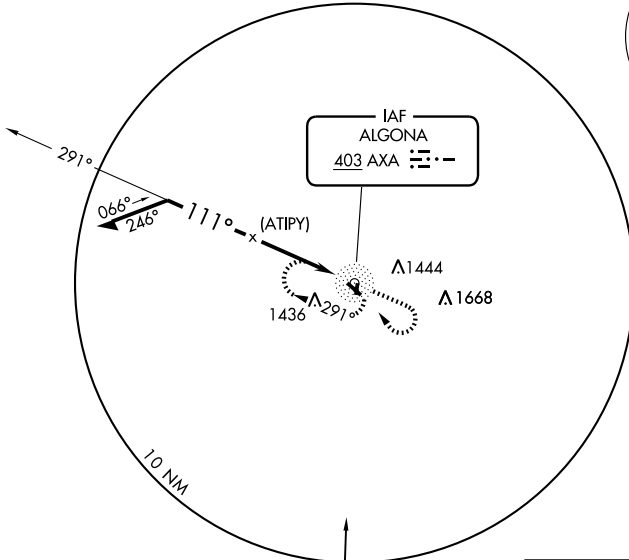
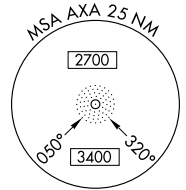
NDB AXA 403	APP CRS 111°	Rwy Idg 3960
		TDZE 1219
		Apt Elev 1219

MISSED APPROACH: Climb to 2900 then right turn direct AXA NDB and hold.

AWOS-3
118.475

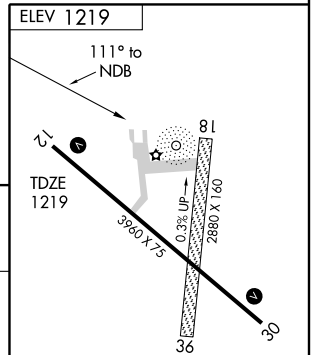
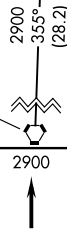
MINNEAPOLIS CENTER
134.0 288.3

UNICOM
122.8 (CTAF)

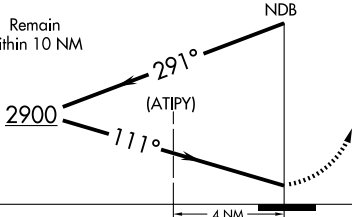


FORT DODGE
113.5 FOD
Chan 82

2365 Δ



Remain within 10 NM



CATEGORY	A	B	C	D
S-12	1840-1	621 (700-1)		NA
CIRCLING	1840-1	621 (700-1)		NA

MIRL Rwy 12-30
REIL Rwy 12 and 30

ALGONA, IOWA
Amdt 5 09071

43°05'N-94°16'W

ALGONA MUNI (AXA) NDB or GPS RWY 12

NC-3, 22 OCT 2009 to 19 NOV 2009

NC-3, 22 OCT 2009 to 19 NOV 2009