

THEDFORD, NEBRASKA

AL-6142 (FAA)

VOR/DME RWY 29

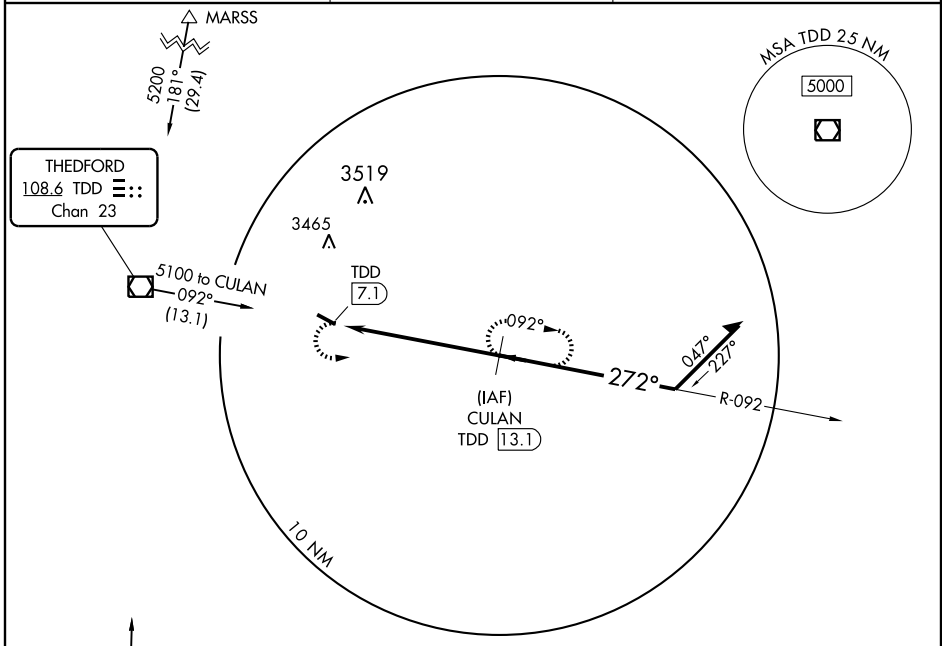
THEDFORD/ THOMAS COUNTY (TIF)

VOR/DME TDD 108.6 Chan 23	APP CRS 272°	Rwy Idg 4400 TDZE 2921 Apt Elev 2925
---	------------------------	--

▼ When local altimeter setting not received, use North Platte altimeter setting and increase all MDA 140 feet.
 ▲ NA VDP NA when using North Platte altimeter setting.

MISSED APPROACH: Climbing left turn to 4900 via heading 049° and TDD R-092 to CULAN/TDD 13.1 DME and hold.

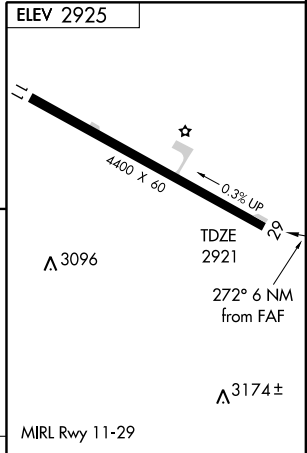
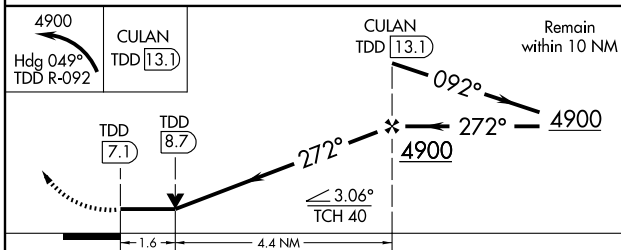
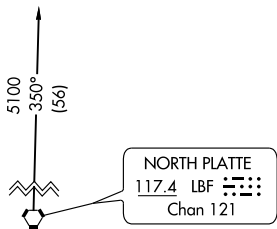
AWOS-3 120.825	DENVER CENTER 127.95 338.2	CTAF 122.9
--------------------------	--------------------------------------	----------------------



THEDFORD
108.6 TDD
Chan 23

NC-2, 22 OCT 2009 to 19 NOV 2009

NC-2, 22 OCT 2009 to 19 NOV 2009



CATEGORY	A	B	C	D	Knots	60	90	120	150	180
S-29	3480-1	559 (600-1)		NA	Min:Sec					
CIRCLING	3480-1	555 (600-1)		NA						

THEDFORD, NEBRASKA
Amdt 1 08269

41° 58' N-100° 34' W

VOR/DME RWY 29