

THEDFORD, NEBRASKA

AL-6142 (FAA)

VOR RWY 11

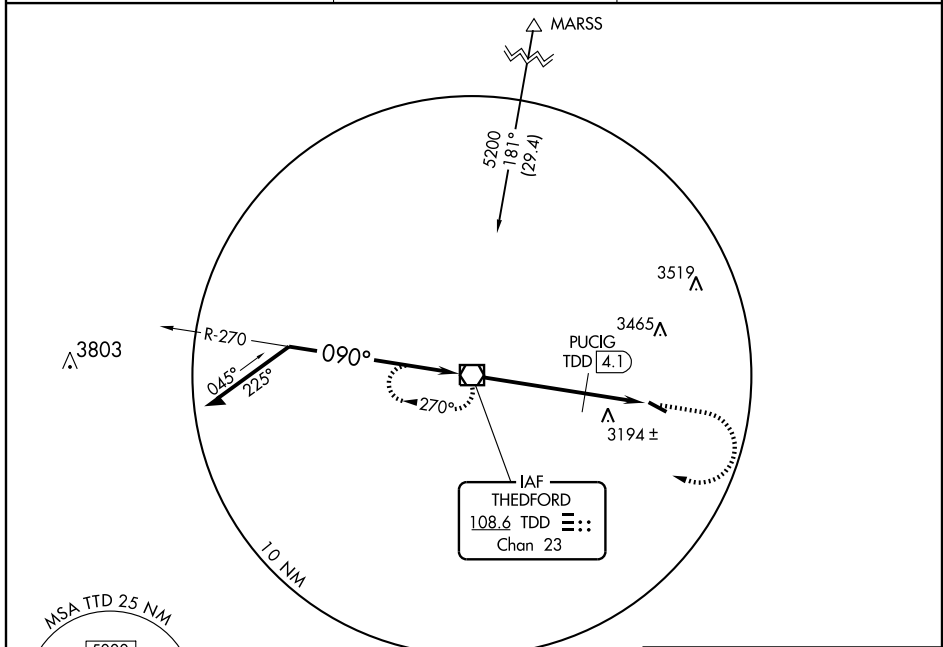
THEDFORD/ THOMAS COUNTY (TIF)

VOR/DME TDD 108.6 Chan 23	APP CRS 090°	Rwy Idg TDZE Apt Elev 4400 2925 2925
---	------------------------	--

▼ Visibility reduction by helicopters NA. When local altimeter setting not received, use North Platte altimeter setting and increase all MDA 140 feet, increase S-11 Cat B and circling Cat B visibility 1/4 mile. VDP NA when using North Platte altimeter setting.

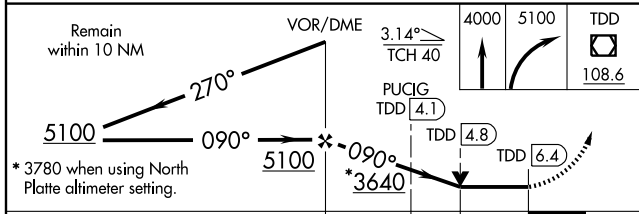
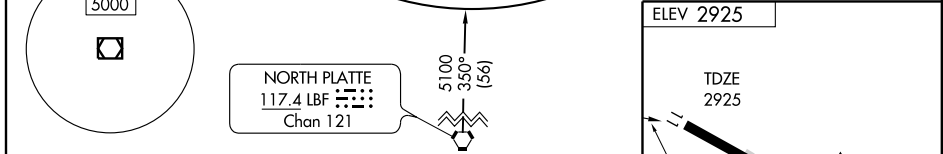
MISSED APPROACH: Climb to 4000 then climbing right turn to 5100 direct TDD VOR/DME and hold.

AWOS-3 120.825	DENVER CENTER 127.95 338.2	CTAF 122.9
--------------------------	--------------------------------------	----------------------



NC-2, 22 OCT 2009 to 19 NOV 2009

NC-2, 22 OCT 2009 to 19 NOV 2009



CATEGORY	A	B	C	D
S-11	3640-1	715 (800-1)		NA
CIRCLING	3640-1	715 (800-1)		NA
PUCIG FIX MINIMUMS				
S-11	3500-1	575 (600-1)		NA
CIRCLING	3500-1	575 (600-1)		NA

ELEV 2925	TDZE 2925	090° 6.4 NM from FAF	4400 x 60	0.3% UP RWY	
MIRL Rwy 11-29					
FAF to MAP 6.4 NM					
Knots	60	90	120	150	180
Min:Sec	6:30	4:20	3:15	2:36	2:10

THEDFORD, NEBRASKA
Amdt 2 08269

41° 58' N-100° 34' W

THEDFORD/ THOMAS COUNTY (TIF)

VOR RWY 11