

RNAV (GPS) RWY 29

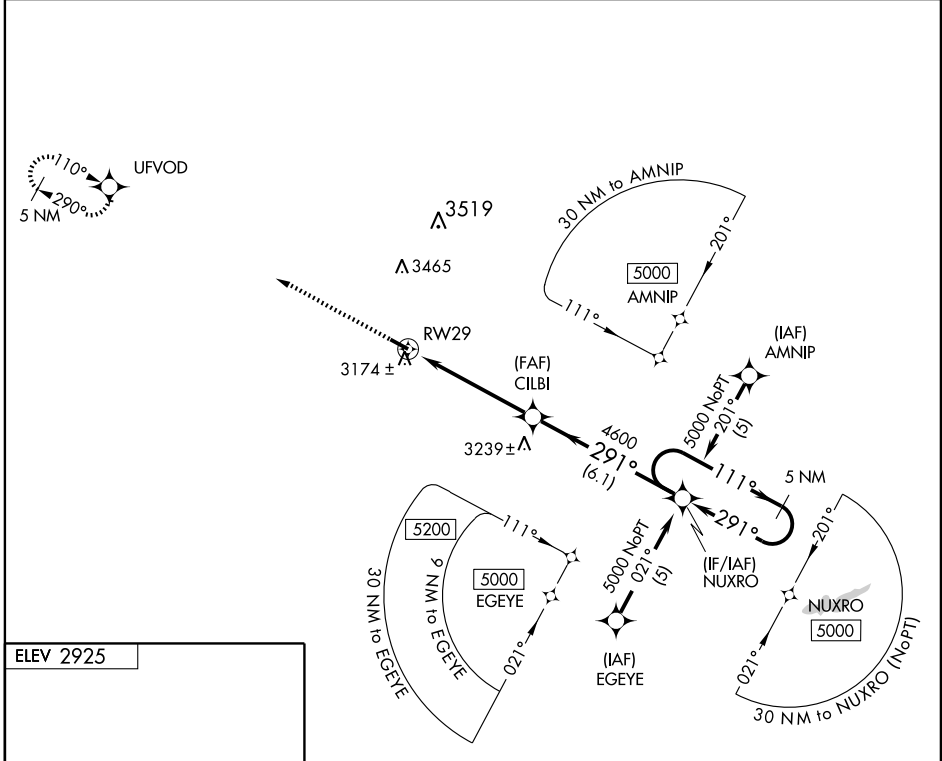
THEDFORD/ THOMAS COUNTY (TIF')

APP CRS 291°	Rwy Idg 4400
	TDZE 2921
	Apt Elev 2925

⚠ DME/DME RNP-0.3 NA. When local altimeter setting not received, use North Platte altimeter setting and increase all MDA 140 feet.
⚠ VDP NA when using North Platte altimeter setting.

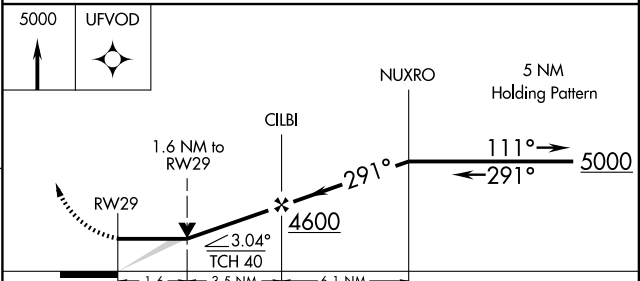
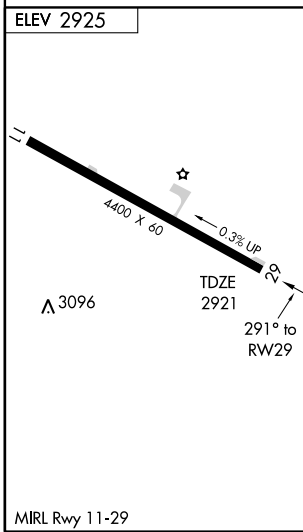
MISSED APPROACH: Climb to 5000 direct UFVOD and hold.

AWOS-3 120.825	DENVER CENTER 127.95 338.2	CTAF 122.9
--------------------------	--------------------------------------	----------------------



NC-2, 22 OCT 2009 to 19 NOV 2009

NC-2, 22 OCT 2009 to 19 NOV 2009



CATEGORY	A	B	C	D
LNAV MDA	3480-1	559 (600-1)	NA	
CIRCLING	3480-1	555 (600-1)	NA	