

HIGHGATE, VERMONT

AL-6141 (FAA)

RNAV (GPS) RWY 19

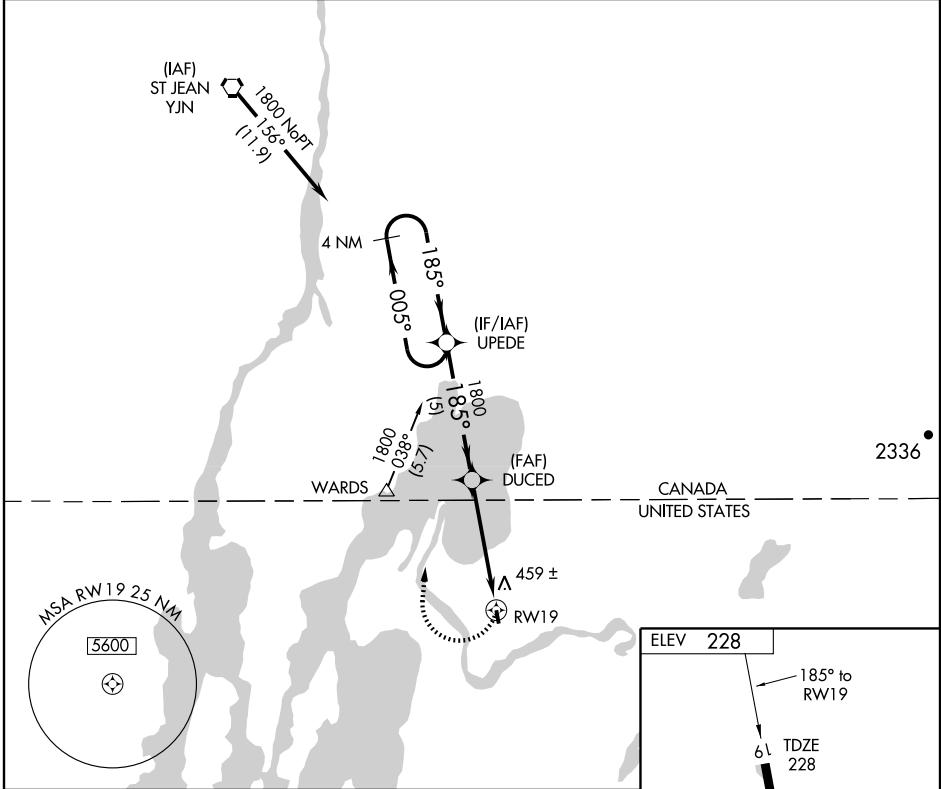
HIGHGATE / FRANKLIN COUNTY STATE (F'SO)

APP CRS 185°	Rwy Idg 3000
	TDZE 228
	Apt Elev 228

T GPS or RNP-0.3 required. DME/DME RNP-0.3 NA.
NA If local altimeter setting not received, use Clinton Co, Plattsburgh, NY altimeter setting and increase all MDAs 200 feet.
 Procedure NA at night.

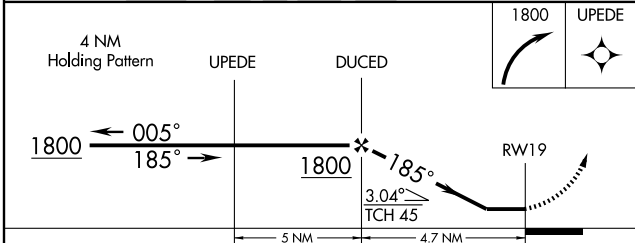
MISSED APPROACH: Climbing right turn to 1800 direct UPEDE and hold.

AWOS-3 119.025	BURLINGTON APP CON* (EAST) 121.1 278.8 (WEST) 126.3 360.8	GCO 121.725	UNICOM 122.8 (CTAF)
--------------------------	---	-----------------------	-------------------------------



NE-1, 22 OCT 2009 to 19 NOV 2009

NE-1, 22 OCT 2009 to 19 NOV 2009



ELEV	228
------	-----

185° to RWY 19
61 TDZE 228

09 x 0000

REIL Rwy 1 and 19 **1**
MIRL Rwy 1-19 **1**

CATEGORY	A	B	C	D
LNAV MDA	840-1	612 (700-1)		NA
CIRCLING	840-1	612 (700-1)		NA

HIGHGATE, VERMONT
 Orig 09295

44°56'N - 73°06'W

HIGHGATE / FRANKLIN COUNTY STATE (F'SO)

RNAV (GPS) RWY 19